

Standard Parts and Accessories
are an ideal addition to Lenzkes Clamps

Hardness of Bolts/Screws according to DIN ISO 898			
Hardness class	8.8	10.9	12.9
Tensile Strength N/mm ²	800	1000	1200
HRC Hardness	22-32	32-39	39-44

Hardness of Nuts according to DIN ISO 898			
Hardness class	8	10	12
Tensile Strength N/mm ²	800	1000	1200
HRC Hardness	20-27	25-32	32-39



Product Class: A and B
Surfaces: High-quality surface finish

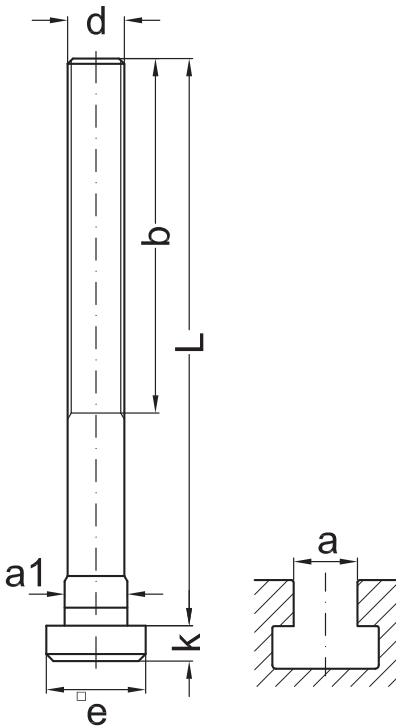
Maintenance:
Fixing nuts and bolts that are used constantly should be regularly greased to increase life span of products.



Bolts/Screws

Product Class A DIN ISO 4759 Part 1

T-Slot Bolts DIN 787 Hardness class 10.9



d	a	L	Part. No.	e	k	b	a1
M06	6	25	787-0606-025	10	4	15	5,7
		40	787-0606-040			28	
		63	787-0606-063			40	
M08	8	32	787-0808-032	13	6	22	7,7
		50	787-0808-050			35	
		80	787-0808-080			50	
M10	10	40	787-1010-040	15	6	30	9,7
		63	787-1010-063			45	
		100	787-1010-100			60	
M10	12	125	787-1012-125	18	7	75	11,7
		132	787-1012-132			80	
		180	787-1012-180			110	
M12	12	50	787-1212-050	18	7	35	11,7
		63	787-1212-063			40	
		80	787-1212-080			55	
		100	787-1212-100			63	
		125	787-1212-125			75	
		132	787-1212-132			80	
		180	787-1212-180			100	
		200	787-1212-200			120	
		M12	14			50	
55	787-1214-055			40			
63	787-1214-063			40			
80	787-1214-080			55			
100	787-1214-100			65			
112	787-1214-112			70			
125	787-1214-125			75			
132	787-1214-132			80			
180	787-1214-180			110			
200	787-1214-200			120			
M14	16	63	787-1416-063	25	9	45	15,7
		80	787-1416-080			55	
		100	787-1416-100			63	
		112	787-1416-112			70	
		140	787-1416-140			90	
		160	787-1416-160			100	
		190	787-1416-190			110	
		250	787-1416-250			150	
		M16	16			63	
100	787-1616-100			63			
125	787-1616-125			85			
160	787-1616-160			100			
200	787-1616-200			125			
250	787-1616-250			150			

d	a	L	Part. No.	e	k	b	a1
M16	18	63	787-1618-063	28	10	45	17,7
		80	787-1618-080			55	
		100	787-1618-100			63	
		125	787-1618-125			85	
		150	787-1618-150			90	
		160	787-1618-160			100	
		200	787-1618-200			125	
		250	787-1618-250			150	
		265	787-1618-265			160	
		360	786-1618-360			250	
M18	20	100	787-1820-100	32	12	63	19,7
		160	787-1820-160			100	
		200	787-1820-200			125	
		265	787-1820-265			160	
		315	787-1820-315			200	
		360	787-1820-360			250	
M20	20	80	787-2020-080	32	12	55	19,7
		100	787-2020-100			65	
		125	787-2020-125			85	
		160	787-2020-160			110	
		200	787-2020-200			125	
		265	787-2020-265			160	
		315	787-2020-315			190	
M20	22	80	787-2022-080	35	14	55	21,7
		100	787-2022-100			63	
		125	787-2022-125			85	
		160	787-2022-160			100	
		180	787-2022-180			120	
		200	787-2022-200			125	
		212	787-2022-212			130	
		250	787-2022-250			150	
		280	787-2022-280			170	
		315	787-2022-315			190	
365	787-2022-365	250					
M22	24	125	787-2224-125	40	16	85	23,7
		200	787-2224-200			125	
		224	787-2224-224			135	
		280	787-2224-280			170	
		370	786-2224-370			250	
M24	24	100	787-2424-100	40	16	70	23,7
		125	787-2424-125			85	
		160	787-2424-160			110	
		200	787-2424-200			125	
		224	787-2424-224			135	
		290	787-2424-290			180	

d	a	L	Part. No.	e	k	b	a1
M24	28	100	787-2428-100	44	18	70	27,7
		125	787-2428-125			85	
		140	787-2428-140			90	
		160	787-2428-160			110	
		200	787-2428-200			125	
		224	787-2428-224			135	
		250	787-2428-250			150	
		290	787-2428-290			180	
		315	787-2428-315			190	
		380	787-2428-380			240	
		400	787-2428-400			240	
		M24	36			230	
290	786-2436-290			200			
380	786-2436-380			250			
M27	32	200	787-2732-200	50	20	125	31,6
M30	36	125	787-3036-125	54	22	80	35,6
		160	787-3036-160			110	
		200	787-3036-200			135	
		250	787-3036-250			150	
		315	787-3036-315			200	

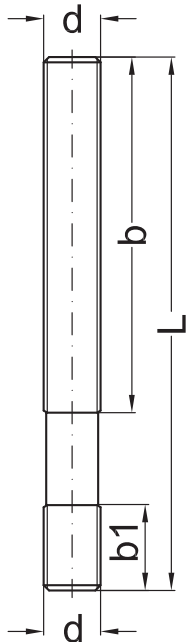


Bolts/Screws

Product Class A DIN ISO 4759 Part 1

Stud Bolts DIN 6379

Thread rolled
Hardness class 10.9



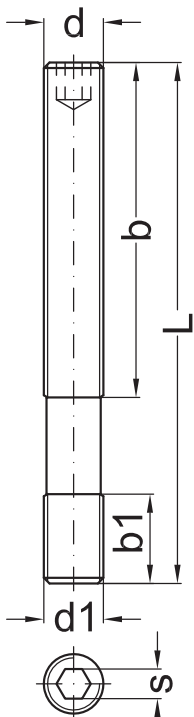
d	L	Part. No.	b	b1
M06	32	379-06-032	16	9
	50	379-06-050	30	
	80	379-06-080	50	
M08	40	379-08-040	20	11
	63	379-08-063	40	
	100	379-08-100	63	
	160	379-08-160	100	
	1000	379-08-1000	500	
M10	50	379-10-050	25	13
	63	379-10-063	32	
	80	379-10-080	50	
	100	379-10-100	75	
	125	379-10-125	75	
	140	379-10-140	90	
	200	379-10-200	125	
	1000	379-10-1000	500	
M12	63	379-12-063	32	15
	80	379-12-080	50	
	100	379-12-100	63	
	125	379-12-125	75	
	150	379-12-150	90	
	200	379-12-200	125	
	1000	379-12-1000	500	
M14	63	379-14-063	32	17
	80	379-14-080	50	
	100	379-14-100	63	
	125	379-14-125	75	
	160	379-14-160	100	
	200	379-14-200	125	
	250	379-14-250	160	
	360	379-14-360	230	
M16	80	379-16-080	50	19
	100	379-16-100	63	
	125	379-16-125	75	
	160	379-16-160	100	
	200	379-16-200	125	
	250	379-16-250	160	
	280	379-16-280	160	
	315	379-16-315	180	
	370	379-16-370	250	
	400	379-16-400	250	
	500	379-16-500	315	
1000	379-16-1000	500		

d	L	Part. No.	b	b1		
M18	80	379-18-080	50	23		
	125	379-18-125	75			
	140	379-18-140	80			
	170	379-18-170	100			
	200	379-18-200	125			
	212	379-18-212	125			
	280	379-18-280	160			
315	379-18-315	180				
M20	80	379-20-080	32	27		
	125	379-20-125	70			
	160	379-20-160	100			
	180	379-20-180	110			
	200	379-20-200	125			
	224	379-20-224	130			
	250	379-20-250	160			
	280	379-20-280	160			
	315	379-20-315	200			
	385	379-20-385	250			
	400	379-20-400	250			
500	379-20-500	315				
1000	379-20-1000	500				
M22	100	379-22-100	45	31		
	160	379-22-160	100			
	224	379-22-224	130			
	250	379-22-250	160			
	315	379-22-315	180			
M24	100	379-24-100	45	35		
	160	379-24-160	100			
	200	379-24-200	125			
	224	379-24-224	130			
M24	250	379-24-250	160	35		
	315	379-24-315	200			
	400	379-24-400	250			
	500	379-24-500	315			
	630	379-24-630	315			
	800	379-24-800	400			
	1000	379-24-1000	500			
	M30	125	379-30-125		55	43
		200	379-30-200		125	
		315	379-30-315		200	
500		379-30-500	315			
700		379-30-700	400			
1000		379-30-1000	400			

Stud Bolts with Hexagon Insert

Thread rolled

Hardness class 10.9



d	d1	L	Part. No.	b	b1	s	
M10	M10	112	380-10-112	75	15	5	
		140	380-10-140	90			
M12	M12	112	380-12-112	75	18	6	
		140	380-12-140	90			
		200	380-12-200	125			
M14	M14	125	380-14-125	75	21	8	
		150	380-14-150	95			
		200	380-14-200	125			
M16	M16	125	380-16-125	75	24	8	
		160	380-16-160	105			
		200	380-16-200	125			
		280	380-16-280	160			
M18	M18	160	380-18-160	100	27	10	
		212	380-18-212	125			
		280	380-18-280	160			
M20	M20	160	380-20-160	100	30	10	
		180	380-20-180	110			
		224	380-20-224	125			
		300	380-20-300	160			
		385	380-20-385	250			
M22	M22	190	380-22-190	100	33	12	
		224	380-22-224	125			
		315	380-22-315	180			
M24	M24	200	380-24-200	110	36	12	
		250	380-24-250	150			
		315	380-24-315	200			
		400	380-24-400	250			
M24	M30	250	380-24-250-30	150	43	12	
		315	380-24-315-30	200			
		400	380-24-400-30	250			
M30	M30	315	380-30-315	200	43	12	

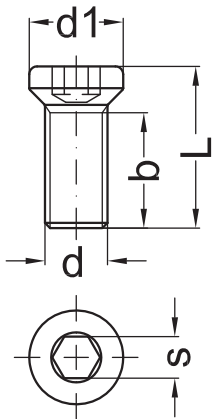
Inch							
d	d1	L	Part. No.	b	b1	s	
M16	5/8	125	381-16-160-58	75	24	8	
		200	381-16-200-58	125			
		280	381-16-280-58	160			
M20	3/4	160	381-20-160-34	100	30	10	
		224	381-20-224-34	125			
		300	381-20-300-34	160			



Bolts/Screws

Product Class A DIN ISO 4759 Part 1

Countersunk Screws with Hexagon Insert Hardness class 12.9



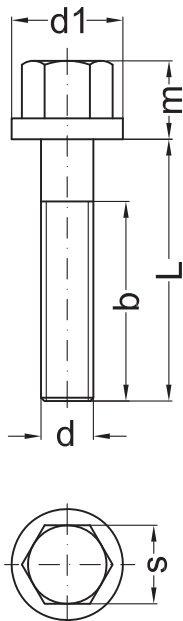
d	L	Part. No.	b	d1	s
M06	19	390-06-019	10	15,5	6
	24	390-06-024	15		
	31	390-06-031	18		
M08	26	390-08-026	18	15,5	6
	30	390-08-030	20		
	40	390-08-040	30		
M10	29	390-10-029	19	18,0	8
	35	390-10-035	23		
	38	390-10-038	23		
	48	390-10-048	28		
M12	27	390-12-027	17	18,0	8
	31	390-12-031	21		
	35	390-12-035	25		
	40	390-12-040	29		
	50	390-12-050	30		
	58	390-12-058	35		
M14	35	390-14-035	24	22,5	10
	41	390-14-041	30		
	48	390-14-048	36		
	55	390-14-055	36		
	62	390-14-062	40		
M16	35	390-16-035	24	22,5	10
	40	390-16-040	28		
	45	390-16-045	33		
	48	390-16-048	33		
	52	390-16-052	40		
	58	390-16-058	40		
	65	390-16-065	45		
	70	390-16-070	45		
M18	45	390-18-045	32	29,0	12
	51	390-18-051	38		
	60	390-18-060	45		
	70	390-18-070	48		
M20	42	390-20-042	29	29,0	12
	51	390-20-051	37		
	55	390-20-055	40		
	60	390-20-060	42		
	65	390-20-065	47		
	68	390-20-068	50		
	75	390-20-075	50		
M22	55	390-22-055	40	35,0	12
	68	390-22-068	50		
	80	390-22-080	60		

d	L	Part. No.	b	d1	s
M24	50	390-24-050	35	35,0	12
	60	390-24-060	45		
	74	390-24-074	52		
	86	390-24-086	60		
	100	390-24-100	70		
M27	60	390-27-060	45	41,0	12
	80	390-27-080	55		
M30	60	390-30-060	46	41,0	12
	75	390-30-075	60		
	86	390-30-086	70		
	100	390-30-100	80		
M36	66	390-36-066	52	47,0	12
	100	390-36-100			

Custom Parts							
d	L	Part. No.	b	d1	s		
M08	25	390-12-025-08	15	18,0	8		
	29	390-12-029-08	18				
	33	390-12-033-08					
M10	27	390-08-027-10	19	15,5	6		
	29	390-08-029-10	23				
	35	390-08-035-10					
M12	30	390-08-030-12	22	15,5	6		
	36	390-08-036-12	26				
	45	390-08-045-12	35				
	50	390-08-050-12	40				
	35	390-16-035-12	24			22,6	10
	40	390-16-040-12					
M16	42	390-20-042-16	29	29,0	12		
	51	390-20-051-16	38				
M20	50	390-24-050-20	36	35,0	12		
	60	390-24-060-20					

Inch					
d	L	Part. No.	b	d1	s
1/2	28	395-012-028	17	18,0	8
	38	395-012-038			
	35	395-16-035-012	24		
5/8	37	395-058-037	26	22,6	10
	42	395-058-042			
	50	395-058-050	39		
	60	395-058-060			
	75	395-058-075			
3/4	45	395-034-045	32	29,0	12
	60	395-034-060			
1	60	395-100-060	46	35,0	12
	75	395-100-075			

Hexagon High Head Bolts
Hardness class 10.9



d	L	Part. No.	b	d1	m	s
M08	65	385-08-065	40	18	11	13
M10	65	385-10-065	45	22	13	16
	75	385-10-075	60			
	100	385-10-100	80			
M12	65	385-12-065	45	25	16	18
	80	385-12-080	60			
	105	385-12-105	90			
	170	385-12-170	90			
M14	70	385-14-070	50	28	19	21
	85	385-14-085	65			
	110	385-14-110	90			
	175	385-14-175	90			
M16	75	385-16-075	60	31	21	24
	80	385-16-080	70			
	85	385-16-085	70			
	110	385-16-110	95			
	175	385-16-175	95			
	215	385-16-215	165			
M18	95	385-18-095	70	34	24	27
	115	385-18-115	100			
	180	385-18-180	100			
M20	95	385-20-095	75	37	26	30
	105	385-20-105	85			
	112	385-20-112	90			
	120	385-20-120	100			
	130	385-20-130	100			
	165	385-20-165	130			
	185	385-20-185	140			
	225	385-20-225	175			
M22	130	385-22-130	90	40	28	34
	190	385-22-190	110			
M24	115	385-24-115	95	45	30	36
	130	385-24-130	110			
	145	385-24-145	120			
	170	385-24-170	140			
	190	385-24-190	150			
	230	385-24-230	190			



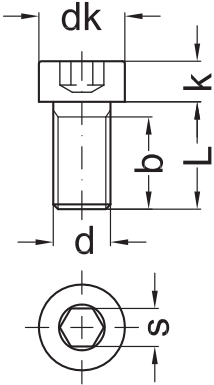
Bolts/Screws

Product Class A DIN ISO 4759 Part 1

Socket Head Bolts DIN 912

for Fixing Set SK / SKO

Hardness class 10.9



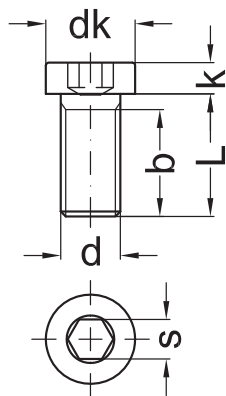
d	L	Part. No.	b	k	dk	s
M04	16	908-04-016	14	4	7	3
M05	16	908-05-016	14	5	8,5	5
M06	12	908-06-012	10	6	10	5
	20	908-06-020	18			
	25	908-06-025	23			
M08	16	908-08-016	14	8	13	6
	25	908-08-025	23			
	35	908-08-035				
M10	30	908-10-030	28	10	16	8
	35	908-10-035				
	40	908-10-040				
	50	908-10-050				
M12	30	908-12-030	28	12	18	10
	35	908-12-035				
	40	908-12-040	36			
	45	908-12-045				
	50	908-12-050				
	55	908-12-055				
M14	40	908-14-040	36	14	21	12
	50	908-14-050				
	55	908-14-055	40			
M16	45	908-16-045	43	16	24	14
	50	908-16-050				
	55	908-16-055				
	60	908-16-060				
	70	908-16-070				
	95	908-16-095				
M18	40	908-18-040	38	18	27	14
	50	908-18-050				
	60	908-18-060				
	75	908-18-075				
	100	908-18-100				
M20	65	908-20-065	52	20	30	17
	70	908-20-070				
	75	908-20-075				
	80	908-20-080				
	90	908-20-090				
	100	908-20-100				
M22	85	908-22-085	52	22	33	17
	110	908-22-110				
M24	90	908-24-090	60	24	36	19
	100	908-24-100				
	120	908-24-120				



Socket Head Bolts DIN 6912

for Fixing Set FL 10

Hardness class 8.8



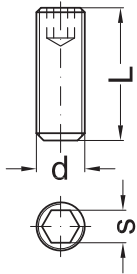
d	L	Part. No.	b	k	dk	s
M04	6	909-04-006	5	2,8	7,0	3
	8	909-04-008	7			
M05	16	909-05-016	15	3,5	8,5	4
	18	909-05-018	17			
M06	10	909-06-010	9	4,0	10,0	5
	20	909-06-020	18			
	22	909-06-022				
M08	16	909-08-016	14	5,0	13,0	6
	20	909-08-020	18			
	22	909-08-022	20			
	25	909-08-025	23			
	30	909-08-030				
M10	20	909-10-020	18	6,5	16,0	7
	25	909-10-025	23			
	30	909-10-030	26			
M12	30	909-12-030	28	7,5	18,0	10
	35	909-12-035	30			
	40	909-12-040				
M14	35	909-14-035	33	8,5	21,0	12
	40	909-14-040	36			
M16	35	909-16-035	33	10,0	24,0	14
	40	909-16-040	38			
	45	909-16-045				
	50	909-16-050				
M18	40	909-18-040	33	11,0	27,0	14
	45	909-18-045	38			
	50	909-18-050				
M20	45	909-20-045	43	12,0	30,0	17
	50	909-20-050	46			
	55	909-20-055				
	60	909-20-060				
	65	909-20-065				



Bolts/Screws

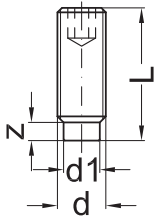
Product Class A DIN ISO 4759 Part 1

Threaded Pins DIN 913 Hardness class 45H



d	L	Part. No.		s
M05	8	913-05-008		2,5
M06	18	913-06-018		3
	20	913-06-020		
M08	20	913-08-020		4
M10	25	913-10-025		5
M12	30	913-12-030		6
M16	40	913-16-040		8
	45	913-16-045		
M20	50	913-20-050		10

Threaded Pins DIN 915 Hardness class 45H

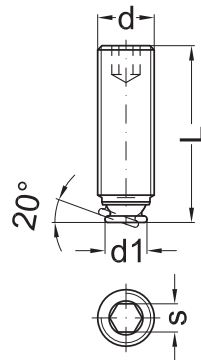


d	L	Part. No.		d1	z	s
M04	4	915-04-004		2,5	1,3	2
M05	5	915-05-005		3,5	1,5	2,5
	12	915-05-010				
M06	8	915-06-008		4	1,8	3
	12	915-06-012				
M08	14	915-08-014		5,5	2,3	4
M10	16	915-10-016		7	2,8	5



**Ball Pressure Screws 20°
with Hexagon Insert**

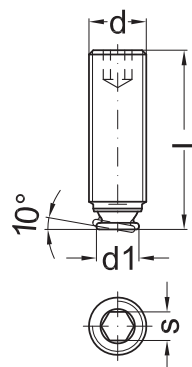
Hardness class 12.9



d	L	Part. No.	d1	s
M10	25	310-10-025	6	5
M12	30	310-12-030	7	6
	32	310-12-032		
	36	310-12-036		
	40	310-12-040		
M16	40	310-16-040	12	8
	50	310-16-050		
	55	310-16-055		
	60	310-16-060		
	80	310-16-080		
M20	50	310-20-050	15	10
	55	310-20-055		
	60	310-20-060		
	70	310-20-070		
M24	60	310-24-060	18	12
	70	310-24-070		
	80	310-24-080		
	90	310-24-090		

**Ball Pressure Screws 10°
with Hexagon Insert**

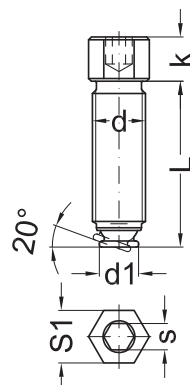
Hardness class 12.9



d	L	Part. No.	d1	s
M 8	20	309-08-020	5	4
M10	25	309-10-025	6	5
M12	30	309-12-030	7	6
M16	40	309-16-040	12	8
M20	50	309-20-050	15	10

**Ball Pressure Screws
with Hexagon Head and Insert**

Hardness class 12.9



d	L	Part. No.	d1	s	s1	k
M12	36	311-12-036	8	6	13	12
	40	311-12-040				
M16	50	311-16-050	12	8	16	15
	60	311-16-060				
M20	70	311-20-070	15	10	19	17
M24	70	311-24-070	18	12	24	20
	80	311-24-080				
	90	311-24-090				



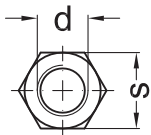
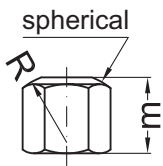
Hexagonal Nuts

Product Class A DIN ISO 4759 Part 1
*old DIN-class

Hexagonal Nuts DIN 6330 B

1,5 d high

Hardness class 10

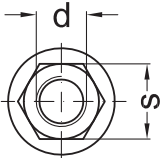
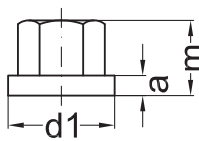


d	Part. No.	s	m	r
M06	330-06	10	9	9
M08	330-08	13	13	12
M10	330-10	16	15	15
M10	330-10-17	17*	15	15
M12	330-12	18	18	17
M12	330-12-19	19*	18	17
M14	330-14	21	21	20
M14	330-14-22	22*	21	20
M16	330-16	24	24	22
M18	330-18	27	27	24
M20	330-20	30	30	27
M22	330-22	34	33	30
M22	330-22-32	32*	33	30
M24	330-24	36	36	32
M27	330-27	41	40	36
M30	330-30	46	45	41

Hexagonal Collar Nuts DIN 6331

1,5 d high

Hardness class 10



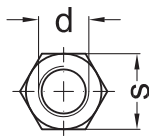
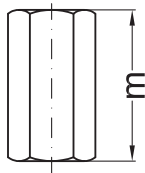
d	Part. No.	s	m	a	d1
M06	331-06	10	9	3	14
M08	331-08	13	12	3,5	18
M10	331-10	16	15	4	22
M10	331-10-17	17*	15	4	22
M12	331-12	18	18	4	25
M12	331-12-19	19*	18	4	25
M14	331-14	21	21	4,5	28
M14	331-14-22	22*	21	4,5	28
M16	331-16	24	24	5	31
M18	331-18	27	27	5	34
M20	331-20	30	30	6	37
M22	331-22	34	33	6	40
M22	331-22-32	32*	33	6	40
M24	331-24	36	36	6	45
M27	331-27	41	40	8	50
M30	331-30	46	45	8	58



Hexagonal Nuts

Product Class A DIN ISO 4759 Part 1
*old DIN-class

Extension Nuts DIN 6334 3,0 d high Hardness class 10



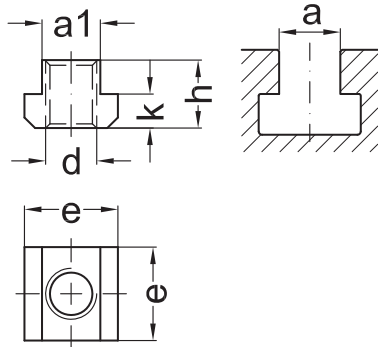
d	Part. No.	s	m
M06	334-06	10	18
M08	334-08	13	24
M10	334-10	16	30
M10	334-10-17	17*	30
M12	334-12	18	36
M12	334-12-19	19*	36
M14	334-14	21	42
M14	334-14-22	22*	42
M16	334-16	24	48
M18	334-18	27	54
M20	334-20	30	60
M22	334-22	34	66
M22	334-22-32	32*	66
M24	334-24	36	72
M30	334-30	46	90



T-Nuts

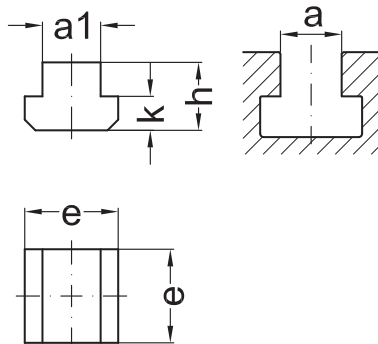
Product Class A DIN ISO 4759 Part 1

T-Nuts DIN 508 Hardness class 10



d	a	Part. No.	a1	e	h	k
M05	6	508-0506	5,7	10	8	4
M06	8	508-0608	7,7	13	10	6
M08	10	508-0810	9,7	15	12	6
	12	508-0812	11,7	18	14	7
M10	12	508-1012	11,7	18	14	7
	14	508-1014	13,7	22	16	8
	16	508-1016	15,7	25	18	9
M12	14	508-1214	13,7	22	16	8
	16	508-1216	15,7	25	18	9
	18	508-1218	17,7	28	20	10
M14	16	508-1416	15,7	25	18	9
	18	508-1418	17,7	28	20	10
M16	18	508-1618	17,7	28	20	10
	20	508-1620	19,7	32	24	12
	22	508-1622	21,7	35	28	14
	24	508-1624	23,7	40	32	16
	28	508-1628	27,7	44	36	18
M18	20	508-1820	19,7	32	24	12
M20	22	508-2022	21,7	35	28	14
	24	508-2024	23,7	40	32	16
	28	508-2028	27,7	44	36	18
M22	24	508-2224	23,7	40	32	16
M24	28	508-2428	27,7	44	36	18
	32	508-2432	31,6	50	40	20
	36	508-2436	35,6	54	44	22
	42	508-2442	41,6	65	52	26
M30	36	508-3036	35,6	54	44	22

T-Nuts DIN 508 Blank Hardness class 10

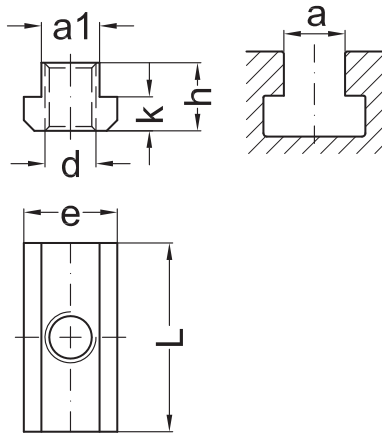


a	Part. No.	a1	e	h	k
6	508-0006	5,7	10	8	4
8	508-0008	7,7	13	10	6
10	508-0010	9,7	15	12	6
12	508-0012	11,7	18	14	7
14	508-0014	13,7	22	16	8
16	508-0016	15,7	25	18	9
18	508-0018	17,7	28	20	10
20	508-0020	19,7	32	24	12
22	508-0022	21,7	35	28	14
24	508-0024	23,7	40	32	16
28	508-0028	27,7	44	36	18
32	508-0032	31,6	50	40	20
36	508-0036	35,6	54	44	22

T-Nuts

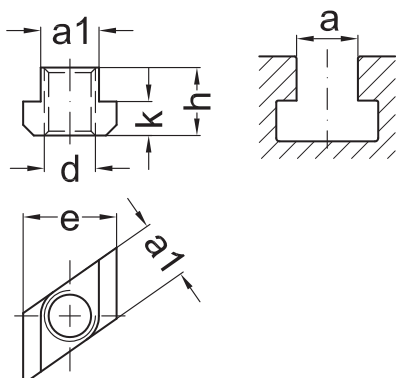
Product Class A DIN ISO 4759 Part 1

T-Nuts DIN 508 L Long Hardness class 10



d	a	Part. No.	a1	e	h	k	L
M06	8	503-0608	7,7	13	10	6	26
M08	10	503-0810	9,7	15	12	6	30
	12	503-0812	11,7	18	14	7	36
M10	12	503-1012	11,7	18	14	7	36
	18	503-1018	17,7	28	20	10	56
M12	14	503-1214	13,7	22	16	8	44
	16	503-1216	15,7	25	18	9	50
M14	16	503-1416	15,7	25	18	9	50
M16	18	503-1618	17,7	28	20	10	56
	20	503-1620	19,7	32	24	12	64
	22	503-1622	21,7	35	28	14	70
M18	20	503-1820	19,7	32	24	12	64
M20	22	503-2022	21,7	35	28	14	70
	24	503-2024	23,7	40	32	16	80
	28	503-2028	27,7	44	36	18	88
M22	24	503-2224	23,7	40	32	16	80
M24	28	503-2428	27,7	44	36	18	88
	36	503-2436	35,6	54	44	22	108
M30	36	503-3036	35,6	54	44	22	108

T-Nuts DIN 508 R Rhombus Hardness class 10



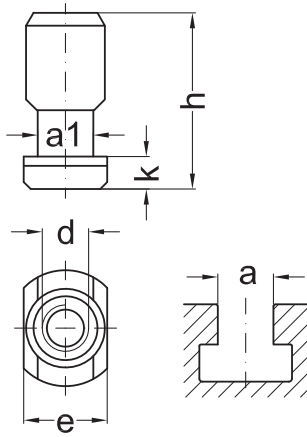
d	a	Part. No.	a1	e	h	k
M06	8	504-0608	7,7	13	10	6
M08	10	504-0810	9,7	15	12	6
M10	12	504-1012	11,7	18	14	7
M12	14	504-1214	13,7	22	16	8
	16	504-1216	15,7	25	18	9
	18	504-1218	17,7	28	20	10
M14	16	504-1416	15,7	25	18	9
M16	18	504-1618	17,7	28	20	10
	20	504-1620	19,7	32	24	12
	22	504-1622	21,7	35	28	14
	28	504-1628	27,7	44	36	18
M18	20	504-1820	19,7	32	24	12
M20	22	504-2022	21,7	35	28	14
	24	504-2024	23,7	40	32	16
	28	504-2028	27,7	44	36	18
M22	24	504-2224	23,7	40	32	16
M24	28	504-2428	27,7	44	36	18
	36	504-2436	35,6	54	44	22
M30	36	504-3036	35,6	54	44	22



T-Nuts

Product Class A DIN ISO 4759 Part 1

T-Nuts high for Clamping Frames Hardness class 10

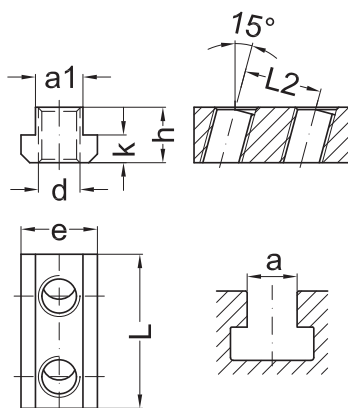


d	a	Part. No.	a1	e	h	k
M08	10	505-045-0810	9,7	15	35	6
M10	12	505-045-1012	11,7	18	38	7
		505-070-1012			50	
		505-110-1012			70	
M12	14	505-045-1214	13,7	22	40	8
		505-070-1214			52	
		505-110-1214			80	
M14	16	505-045-1416	15,7	25	44	9
		505-070-1416			56	
		505-110-1416			84	
M16	18	505-045-1618	17,7	28	47	10
		505-070-1618			55	
		505-110-1618			87	
		505-180-1618			120	
		505-260-1618			160	
M16	20	505-045-1620	19,7	32	50	12
		505-110-1620			90	
		505-180-1620			123	
		505-260-1620			163	
M16	22	505-045-1622	21,7	35	54	14
M18	20	505-070-1820	19,7	32	61	12
		505-110-1820			90	
		505-180-1820			122	
M20	22	505-070-2022	21,7	35	65	14
		505-110-2022			90	
		505-180-2022			126	
		505-260-2022			166	
M20	24	505-070-2024	23,7	40	68	16
		505-110-2024			90	
		505-180-2024			130	
		505-260-2024			170	
M20	28	505-070-2028	27,7	44	73	18
M22	24	505-110-2224	23,7	40	90	16
M24	28	505-080-2428	27,7	44	80	18
		505-110-2428			100	
		505-180-2428			135	
		505-260-2428			175	
M24	32	505-110-2432	31,6	50	104	20
M24	36	505-110-2436	35,6	54	116	22
		505-180-2436			150	
M24	42	505-180-2442	41,6	65	135	26

T-Nuts · Special Design

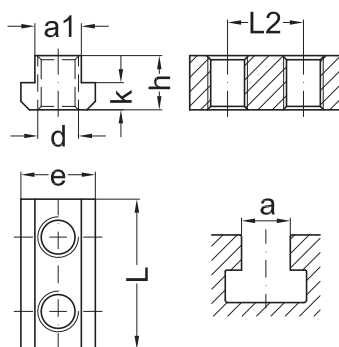
Product Class A DIN ISO 4759 Part 1

T-Nuts with two holes, 15°
for FL and SK/SKO
Hardness class 10



d	a	Part. No.	a1	e	h	k	L	L2
M08	10	503-0810-2-15-13	9,7	15	12	6	42	25
M10	12	503-1012-2-15	11,7	18	14	7	48	25
M12	14	503-1214-2-15	13,7	22	16	8	48	25
		503-1214-2-15-17					56	33
	16	503-1216-2-15	15,7	25	18	9	50	25
	18	503-1218-2-15	17,7	28	20	10	50	25
M14	16	503-1416-2-15	15,7	28	19	9	59	33
M16	18	503-1618-2-15	17,7	28	20	10	61	33
		503-1618-2-15-21					68	40
	20	503-1620-2-15	19,7	32	24	12	64	33
	22	503-1622-2-15	21,7	35	28	14	64	33
M18	20	503-1820-2-15	19,7	32	24	12	72	40
M20	22	503-2022-2-15	21,7	35	28	14	75	40
		503-2022-2-15-25					83	48
	24	503-2024-2-15	23,7	40	32	16	76	40
	28	503-2028-2-15	27,7	44	36	18	77	40
M22	24	503-2224-2-15	23,7	40	32	16	88	48
M24	28	503-2428-2-15	27,7	44	36	18	92	48
	36	503-2436-2-15	35,6	54	44	22	94	48

T-Nuts with two holes
for FL, first version
Hardness class 10



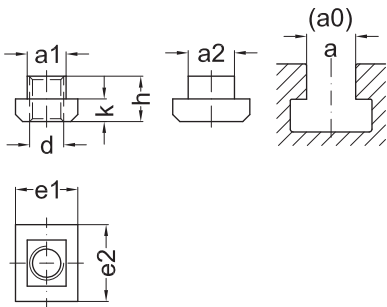
d	a	Part. No.	a1	e	h	k	L	L2
M06	8	503-0608-09-2	7,7	12	10	6	32	19
M08	10	503-0810-09-2	9,7	15	12	6	33	19
	12	503-0812-09-2					7	39
M12	14	503-1214-13-2	13,7	22	16	8	48	26
M16	18	503-1618-17-2	17,7	28	20	10	61	33
M20	22	503-2022-21-2	21,7	35	28	14	75	41
	22	503-2022-32-2					70	32
	22	503-2022-38-2					70	38
	28	503-2028-21-2					27,7	44



T-Nuts · Special Design

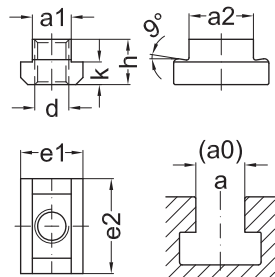
Product Class A DIN ISO 4759 Part 1

Double T-Nuts for two T-Slots Hardness class 10



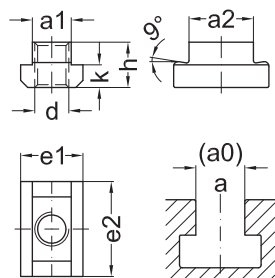
d	a	Part. No.	a0	a1	a2	e1	e2	h	k
M10	12	502-1012-14	14	11,7	13,7	18	22	14	7
M12	14	502-1214-16	16	13,7	15,7	22	25	16	8
		502-1214-18	18		17,7		28		
		502-1214-20	20		19,7		32		
		502-1214-22	22		21,7		35		
M14	16	502-1416-18	18	15,7	17,7	22	28	18	9
M16	18	502-1618-20	20	17,7	19,7	28	32	20	10
		502-1618-22	22		21,7		35		
		502-1618-24	24		23,7		40		
		502-1618-28	28		27,7		44		
M18	20	502-1820-22	22	19,7	21,7	32	35	24	12
M20	22	502-2022-24	24	21,7	23,7	35	40	28	14
		502-2022-28	28		27,7		44		
M24	28	502-2428-32	32	27,7	31,6	44	50	36	18
		502-2428-36	36		35,6		54		

Riser T-Nuts 9° for MQ-Clamps for Aluminium Clamping Shoes Hardness class 10



d	a	Part. No.	a0	a1	a2	e1	e2	h	k
M10	12	509-1012-24	24	11,7	23,6	18	35	14	7
M12	14	509-1214-24	24	13,7	23,6	22	35	16	8
M14	16	509-1416-28	28	15,7	27,6	25	41	18	9
M16	18	509-1618-28	28	17,7	27,6	28	41	20	10
M18	20	509-1820-34	34	19,7	33,6	32	49	24	12
M20	22	509-2022-34	34	21,7	33,6	35	49	25	14
M20	28	509-2028-34	34	27,7	33,6	44	49	31	18
M24	28	509-2428-34	34	27,7	33,6	44	49	31	18
M24	28	509-2428-42	42	27,7	41,6	44	61	31	18

Riser T-Nuts 9° for MQ-Clamps for Steel Clamping Shoes Hardness class 10

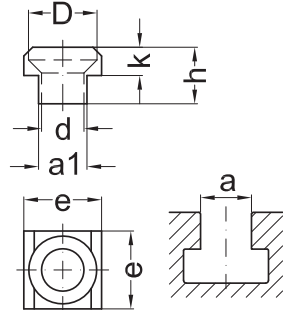


d	a	Part. No.	a0	a1	a2	e1	e2	h	k
M12	-	509-1224	24	22,0	23,6	22	35	20	13
M16	-	509-1628	28	28,0	27,6	28	41	25	16
M20	-	509-2034	34	35,0	33,6	35	49	30	19
M24	-	509-2442	42	44,0	41,6	44	61	31	18

T-Nuts

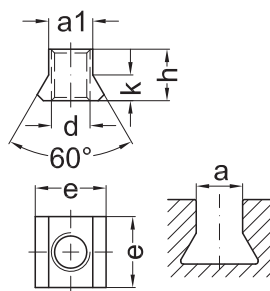
Product Class A DIN ISO 4759 Part 1

B50 Nuts for Countersunk Screw Hardness class 10



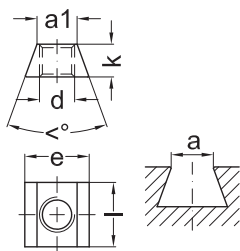
d	a	Part. No.	a1	e	h	k	D
M10	12	501-1012	11,7	18	14	7	16
M12	14	501-1214	13,7	22	16	8	19
M14	16	501-1416	15,7	25	18	9	23
M16	18	501-1618	17,7	28	20	10	23
M18	20	501-1820	19,7	32	24	12	30
M20	22	501-2022	21,7	35	28	14	30
M22	24	501-2224	23,7	40	32	16	36
M24	28	501-2428	27,7	44	36	18	36

V-Nuts Hardness class 10



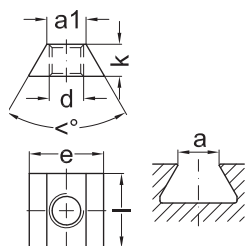
d	a	Part. No.	a1	e	h	k	α
M12	14	506-1214	13,7	22	16	8	60
	16	506-1216	15,7	25	18	9	
M14	16	506-1416	15,7	25	18	9	60
M16	18	506-1618	17,7	28	20	10	60
	20	506-1620	19,7	32	24	12	
M18	20	506-1820	19,7	32	24	12	60
M20	22	506-2022	21,7	35	28	14	60
	24	506-2024	23,7	40	32	16	
M24	28	506-2428	27,7	44	36	18	60

V-Nuts Hardness class 10



d	a	Part. No.	a1	e	l	k	α
M12	15	500-1215.4	15,4	25	25	15	40
	18	500-1218.4	18,4				
M16	18	500-1618.4	18,4	29	35	15	40
M20	22	500-2022.4	22,4	35	40	20	40

V-Nuts Hardness class 10



d	a	Part. No.	a1	e	l	k	α
M12	14	507-1214	14,4	30	25	15	60
M14	16	507-1416	16,4	30	30	15	60
M16	18	507-1618	18,4	40	40	20	60
M20	22	507-2022	22,4	50	40	25	60
M24	28	507-2428	28,4	60	45	30	60

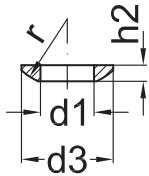


Washers

Product Class A DIN ISO 4759 Part 1

Spherical Seat Washers DIN 6319 Shape C

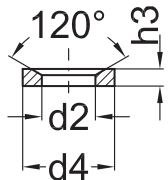
Hardened, 550 + 100 HV10



d	Part. No.	d1	d3	h2	r
M08	319-108	8,4	17	3,2	12
M10	319-110	10,5	21	4,0	15
M12	319-112	13,0	24	4,6	17
M14	319-114	15,0	28	5,0	22
M16	319-116	17,0	30	5,3	22
M20	319-120	21,0	36	6,3	27
M24	319-124	25,0	44	8,2	32
M30	319-130	31,0	56	11,2	41

Dished Washers DIN 6319 Shape D

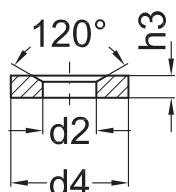
Hardened, 550 + 100 HV10



d	Part. No.	d2	d4	h3
M08	319-208	9,6	17	3,5
M10	319-210	12,0	21	4,2
M12	319-212	14,2	24	5,0
M14	319-214	16,5	28	5,6
M16	319-216	19,0	30	6,2
M20	319-220	23,2	36	7,5
M24	319-224	28,0	44	9,5
M30	319-230	35,0	56	12,0

Dished Washers DIN 6319 Shape G

Tempered, 350 + 80 HV30



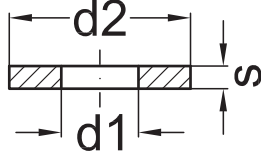
d	Part. No.	d2	d4	h3
M08	319-308	9,6	24	5,0
M10	319-310	12,0	30	5,0
M12	319-312	14,2	36	6,0
M14	319-314	16,5	40	6,0
M16	319-316	19,0	44	7,0
M20	319-320	23,2	50	8,0
M24	319-324	28,0	60	10,0
M30	319-330	35,0	68	12,0

Washers

Product Class A DIN ISO 4759 Part 1

Washers DIN 6340

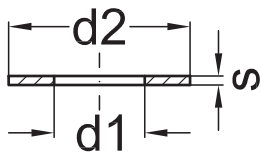
Product Class A, DIN 522
Tempered, 350 + 80 HV30



d	Part. No.	d1	d2	s
M06	340-06	6,4	17	3
M08	340-08	8,4	23	4
	340-081		18	3
M10	340-10	10,5	28	4
M12	340-12	13,0	35	5
	340-121		30	
M14	340-14	15,0	40	5
	340-141		32	
M16	340-16	17,0	45	6
	340-161		32	5
	340-162		40	
M18	340-18	19,0	45	6
	340-181		40	
M20	340-20	21,0	50	6
	340-201		40	5
M22	340-22	23,0	50	8
M24	340-24	25,0	60	8
M27	340-27	28,0	68	10
M30	340-30	31,0	68	10

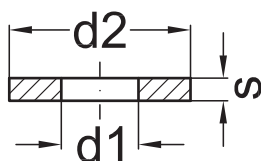
Washers

Hardness class 14.9



d	Part. No.	d1	d2	s
M12	342-12	14,0	28,0	1,0
M14	342-14	16,0	31,5	1,2
M16	342-16	18,0	31,5	1,2
M18	342-18	20,0	40,0	1,5
M20	342-20	22,0	40,0	1,5
M22	342-22	24,0	45,0	1,7
M24	342-24	26,0	45,0	1,7
M30	342-30	31,0	60,0	3,5

Washers



d	Part. No.	d1	d2	s
M10	344-10	10,5	18,0	1,6
M12	344-12	13,0	20,0	2,0
M14	344-14	15,0	24,0	2,5
M16	344-16	17,0	28,0	2,5
M20	344-20	21,0	34,0	3,0
M20	344-201	22,0	32,0	2,0
M24	344-24	25,0	39,0	4,0



Bolt Sets

Bolt Sets for T-Slots
In wooden box



Part No.		391-1214	391-1416	391-1618	391-1820	391-2022	391-2428
Thread / T-Slot width (d x a)		M12 a 14	M14 a 16	M16 a 18	M18 a 20	M20 a 22	M24 a 28
Pcs x Length		St. x L	St. x L	St. x L	St. x L	St. x L	St. x L
T-Slot Bolts	DIN 787	4 x 050	4 x 063	4 x 080	4 x 125	4 x 100	4 x 100
		4 x 080	4 x 100	4 x 125	4 x 160	4 x 160	4 x 160
		4 x 125	4 x 160	4 x 160	4 x 200	4 x 200	4 x 290
		4 x 180	4 x 190	4 x 200	4 x 265	4 x 280	–
Stud Bolts	DIN 6379	4 x 100	4 x 100	4 x 100	4 x 125	4 x 125	4 x 160
		4 x 150	4 x 160	4 x 160	4 x 170	4 x 180	4 x 224
		4 x 200	4 x 200	4 x 200	4 x 212	4 x 224	4 x 315
		4 x 265	4 x 265	4 x 280	4 x 280	4 x 280	4 x 400
Washers	DIN 6340	4	4	4	4	4	4
Collar Nuts	DIN 6331	4	4	4	4	4	4
Extension Nuts	DIN 6334	4	4	4	4	4	4
T-Nuts	DIN 508	4	4	4	4	4	4
T-Nuts Long	DIN 508L	2	2	2	2	2	2
Spherical Seat Washers C with Dished Washers G	DIN 6319	2	2	2	2	2	2
Bolt Grease		1	1	1	1	1	1
Set							

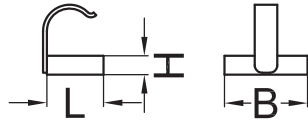


Used with MO-Clamps, helps to protect the work piece surface, especially soft materials

■ Material: Quality Steel

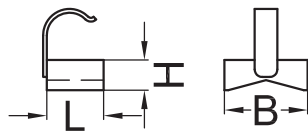
Workpiece Protection Plate

Flat



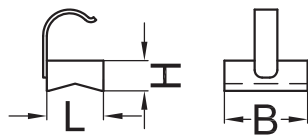
Sz.	Part. No.	€	L	B	H
12	991-7012-1	2,95	15	22	5
16	991-7016-1	3,30	15	26	6
20	991-7020-1	4,45	20	32	7
24	991-7024-1	5,20	20	40	8

Prism-Longitudinal



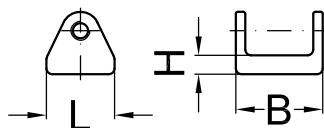
Sz.	Part. No.	€	L	B	H
12	991-7012-2	3,85	15	20	12
16	991-7016-2	4,15	15	25	12
20	991-7020-2	5,60	20	30	16
24	991-7024-2	6,10	20	40	16

Prism-Crosswise



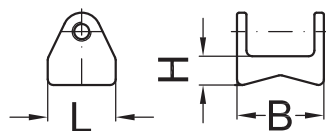
Sz.	Part. No.	€	L	B	H
12	991-7012-3	4,90	15	22	12
16	991-7016-3	5,70	15	26	12
20	991-7020-3	7,20	20	32	16
24	991-7024-3	8,70	20	40	16

Flat



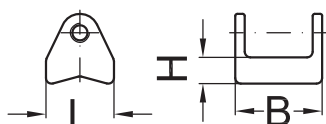
Sz.	Part. No.	€	L	B	H
8	991-150-08-1	4,10	15	19	5
12	991-150-12-1	4,70	18	23	5
16	991-150-16-1	5,20	20	27	6
20	991-150-20-1	6,45	22	32	7
24	991-150-24-1	7,35	24	40	8

Prism-Longitudinal



Sz.	Part. No.	€	L	B	H
12	991-150-12-2	4,80	18	23	7
16	991-150-16-2	5,25	20	27	8
20	991-150-20-2	6,55	22	32	10
24	991-150-24-2	7,45	24	40	12

Prism-Crosswise



Sz.	Part. No.	€	L	B	H
12	991-150-12-3	4,80	18	23	7
16	991-150-16-3	5,25	20	27	8
20	991-150-20-3	6,55	22	32	10
24	991-150-24-3	7,45	24	40	12



Wrenches/ Allen Keys

Ball end Hexagonal Allen Key
Chrome-Vanadium Steel, hardened



s	Part No.	L1	L2
6	610-06	160	60
8	610-08	200	70
10	610-10	230	80
12	610-12	260	90
14	610-14	280	95
17	610-17	300	100

Hexagonal Allen Key with Cone
Chrome-Vanadium Steel, hardened



s	Part No.	L1	L2	d
4	611-04	140	25	2,5
5	611-05	160	28	3
6	611-06	180	32	4
8	611-08	200	36	5
10	611-10	224	40	6
12	611-12	250	45	7
14	611-14	280	55	8
17	611-17	320	63	10

Hexagonal Allen Key w/o Cone
Chrome-Vanadium Steel, hardened



s	Part No.	L1	L2
2	612-02	52	18
2,5	612-025	58	20
3	612-03	66	23
4	612-04	74	29
5	612-05	85	33
19	612-19	330	100

Torque Wrench 1/2 inch



Nm	Part No.	L
10-060	605-060	380
30-130	605-130	470
40-210	605-210	460
70-350	605-350	630

Torque Wrench 1/2 inch
Accuracy ± 4% ISO 6789 certified
Automatic reset wrench



Nm	Part No.	L
40-200	605-200-f	479
60-340	605-340-f	632

Adapter ½ inch
For torque wrench



s	Part No.		L
8	606-08		25
10	606-10		25
12	606-12		25

Combination Wrench
Chrome-plated, hardened steel



s	Part No.		L
13	620-13		160
14	620-14		170
16	620-16		180
17	620-17		190
18	620-18		200
19	620-19		210
21	620-21		260
22	620-22		260
24	620-24		280
27	620-27		300
30	620-30		330
32	620-32		400
34	620-34		450
36	620-36		460

Double Open-Ended Wrench
Hardened steel



s	Part No.		s1	L
16	622-1618		18	160
18	622-1821		21	190
19	622-1924		24	215
24	622-2427		27	245
27	622-2730		30	270

Ratchet Combination Wrench
Chrome-plated, hardened steel



s	Part No.		L
13	623-13		185
14	623-14		190
16	623-16		210
17	623-17		225
18	623-18		235
19	623-19		250

