

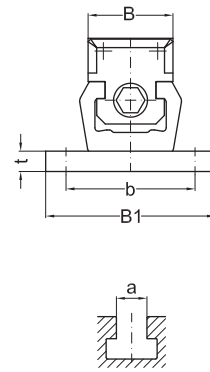
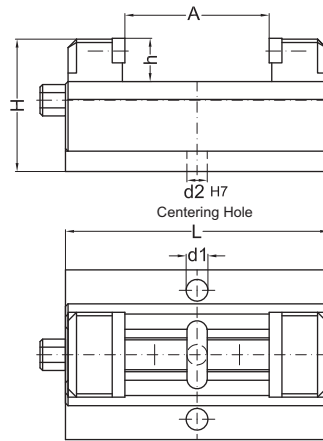
Self Centering Clamps (complete)

Application Example: Metal cutting

- Self centering
- Centering accuracy is 0.04 mm
- Interchangeable jaws
- Base Plate with centered tapped hole

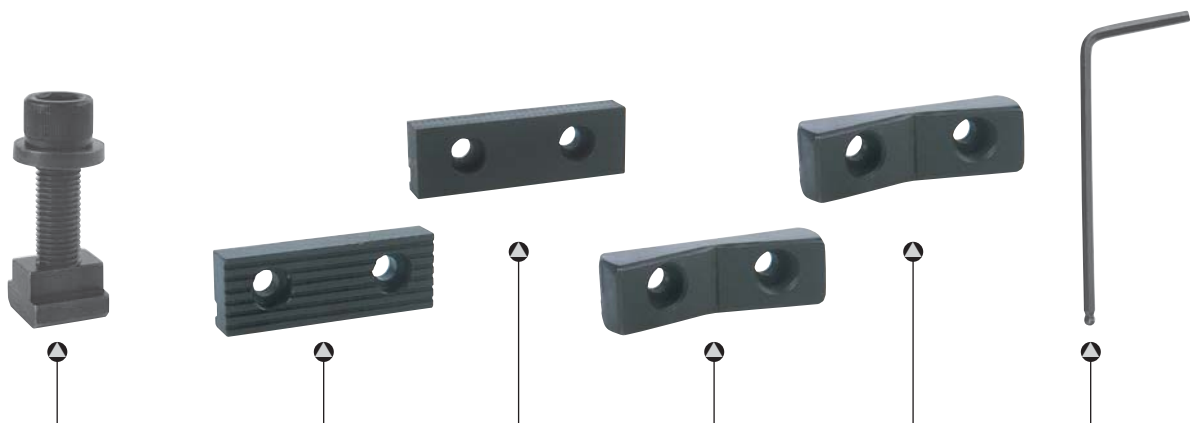
Clamping Force: **Up to 25 kN**

- **Material: Hardened alloy steel**



														Wrench		
A	d	a	Part No.		B	B1	L	H	h	t	b	d1	d2	kN	Part No.	
0-55	-	-	860-050-125-00		50	100	125	78	25	12	80	13	12	20	623-14	
	M10	12	860-050-125-1012													
	M12	14	860-050-125-1214													
	M12	16	860-050-125-1216													
0-85	-	-	860-050-155-00		50	100	155	78	25	12	80	13	12	20	623-14	
	M10	12	860-050-155-1012													
	M12	14	860-050-155-1214													
	M12	16	860-050-155-1216													
0-90	-	-	860-080-180-00		80	150	180	110	40	15	110	17	16	25	623-17	
	M12	14	860-080-180-1214													
	M14	16	860-080-180-1416													
	M16	18	860-080-180-1618													
	M16	20	860-080-180-1620													
0-130	-	-	860-080-220-00		80	150	220	110	40	15	110	17	16	25	623-17	
	M12	14	860-080-220-1214													
	M14	16	860-080-220-1416													
	M16	18	860-080-220-1618													
	M16	20	860-080-220-1620													
0-210	-	-	860-080-300-00		80	150	300	110	40	15	110	17	16	25	623-17	
	M12	14	860-080-300-1214													
	M14	16	860-080-300-1416													
	M16	18	860-080-300-1618													
	M16	20	860-080-300-1620													

Self Centering Clamps (Spare Parts)



Fixing Set				Steel Jaw		Plastic Jaw		Prism Steel Jaw		Prism Plastic Jaw		Allen Key ⬡				
Part No.		L	s	Part No.		Part No.		Part No.		Part No.		Part No.				
-		-	-	860-13-31		860-13-32		860-13-33		860-13-34		-				
907-50-1012		30	8												610-08	
907-50-1214		35	10												610-10	
907-50-1216		40														
-		-	-	860-13-31		860-13-32		860-13-33		860-13-34		-				
907-50-1012		30	8												610-08	
907-50-1214		35	10												610-10	
907-50-1216		40														
-		-	-	860-21-31		860-21-32		860-21-33		860-21-34		-				
907-80-1214		40	10												610-10	
907-80-1416			12												610-12	
907-80-1618		45	14												610-14	
907-80-1620		50														
-		-	-	860-21-31		860-21-32		860-21-33		860-21-34		-				
907-80-1214		40	10												610-10	
907-80-1416			12												610-12	
907-80-1618		45	14												610-14	
907-80-1620		50														
-		-	-	860-21-31		860-21-32		860-21-33		860-21-34		-				
907-80-1214		40	10												610-10	
907-80-1416			12												610-12	
907-80-1618		45	14												610-14	
907-80-1620		50														

