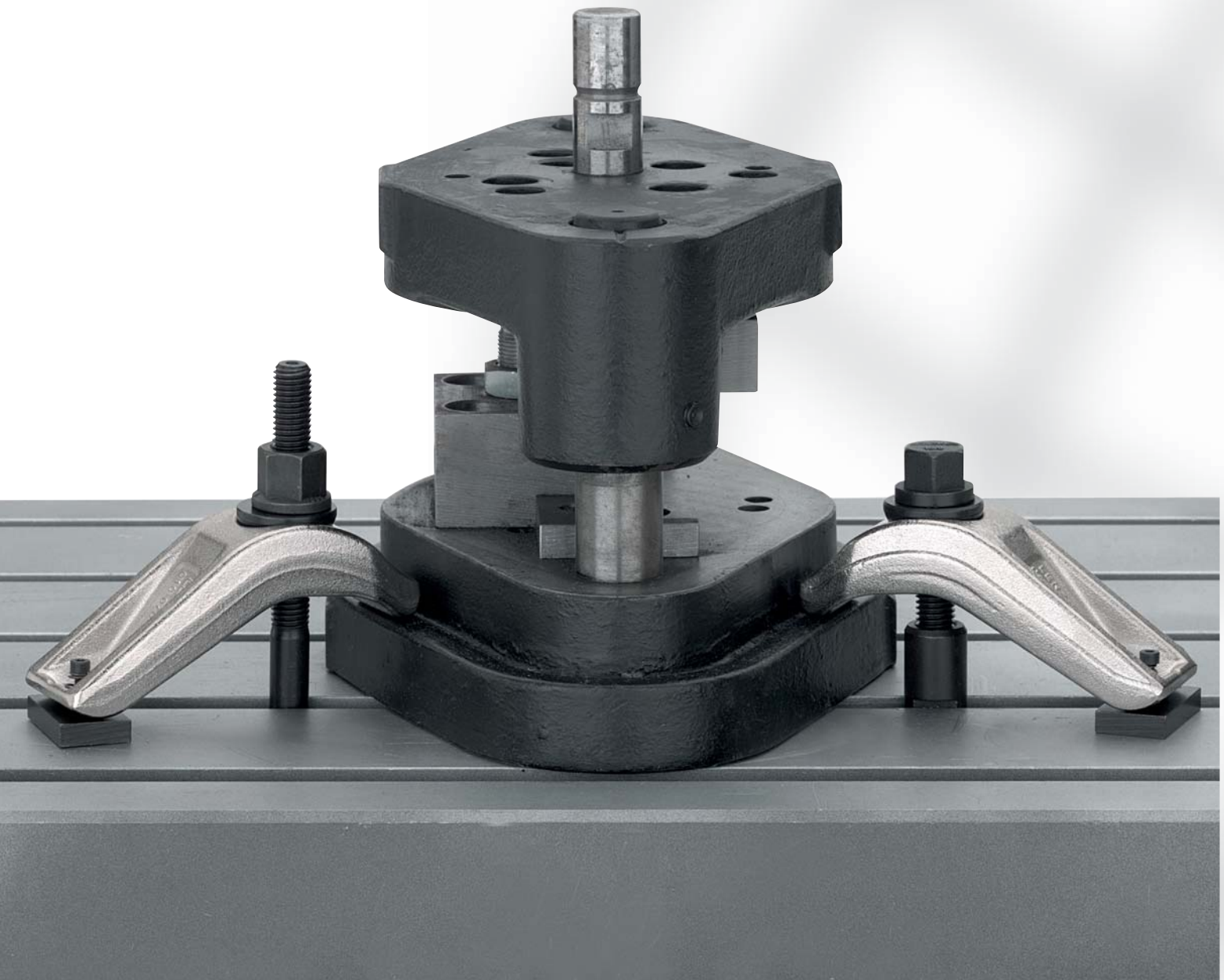
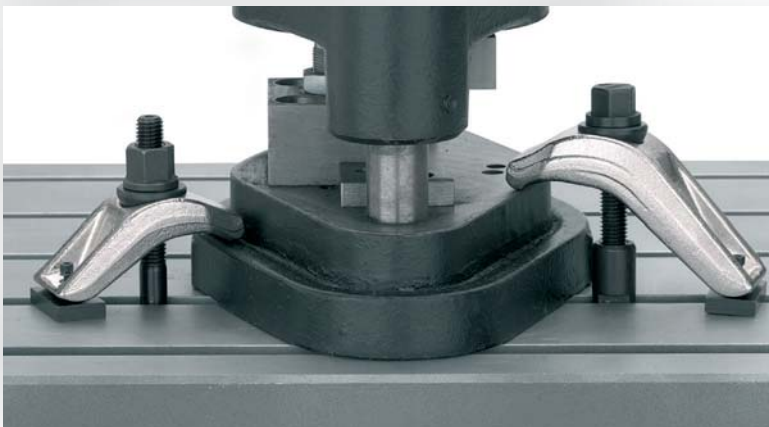
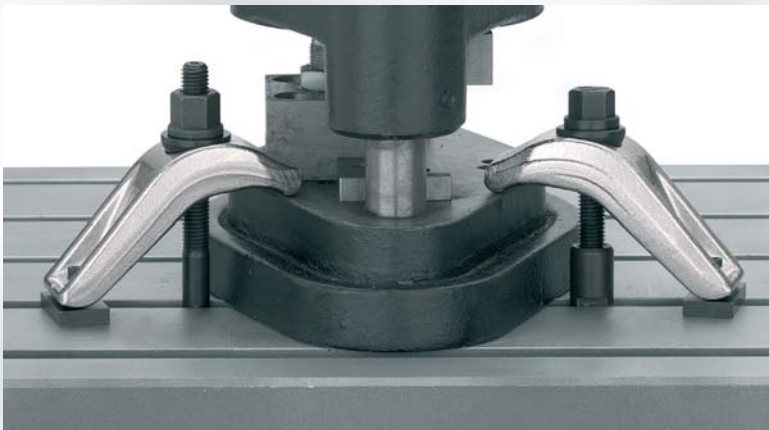
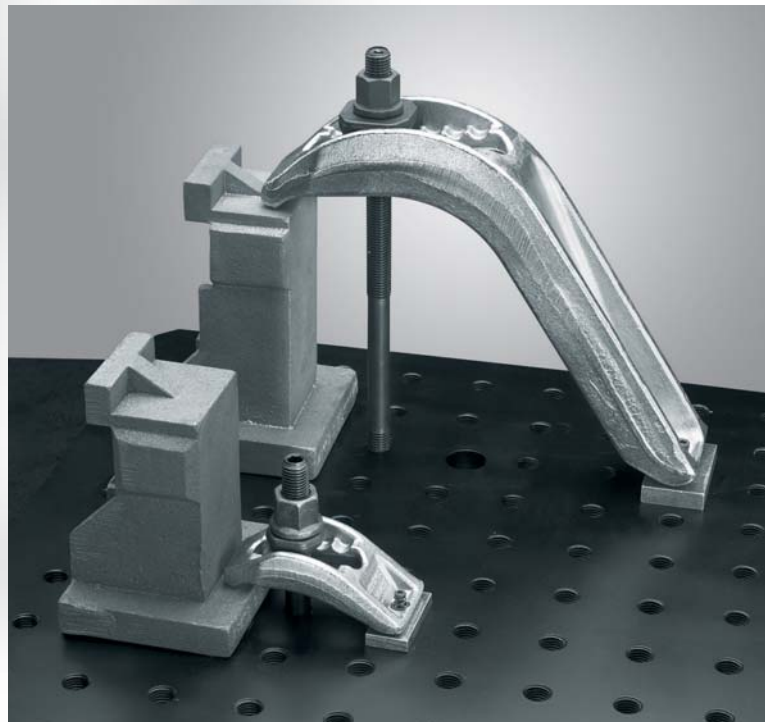
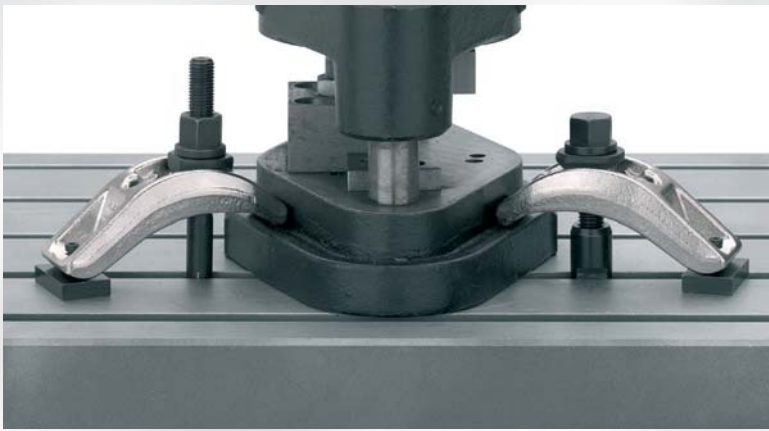


## Clamping Frames – Flexible clamping solutions S 10/S 30

**S 10 and S 20** have a clamping force up to 70 kN. These clamps offer great stepless vertical adjustment. The S 20's are used when protruding bolts are obstructive.

**S 30 and S 40** have a clamping force up to 70 kN. These clamps are adjustable both vertically and horizontally due to the unique grooved frame design and can clamp up to 260 mm high. The S 40's are used when protruding bolts are obstructive.





## Clamping Frames S10 – S20 (complete)

**Application Examples:**  
Pressure die casting, pressing, stamping,  
heavy duty milling and drilling

- Stepless vertically adjustable
- S20: No protruding bolts
- Very high clamping forces

Clamping Force: **Up to 70 kN**

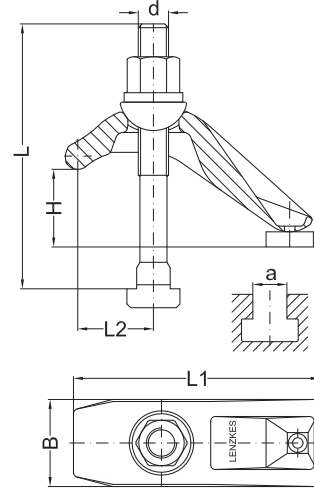
- **Material:** Tempered steel
- **Clamping Frame:** Drop forged



for T-Slots

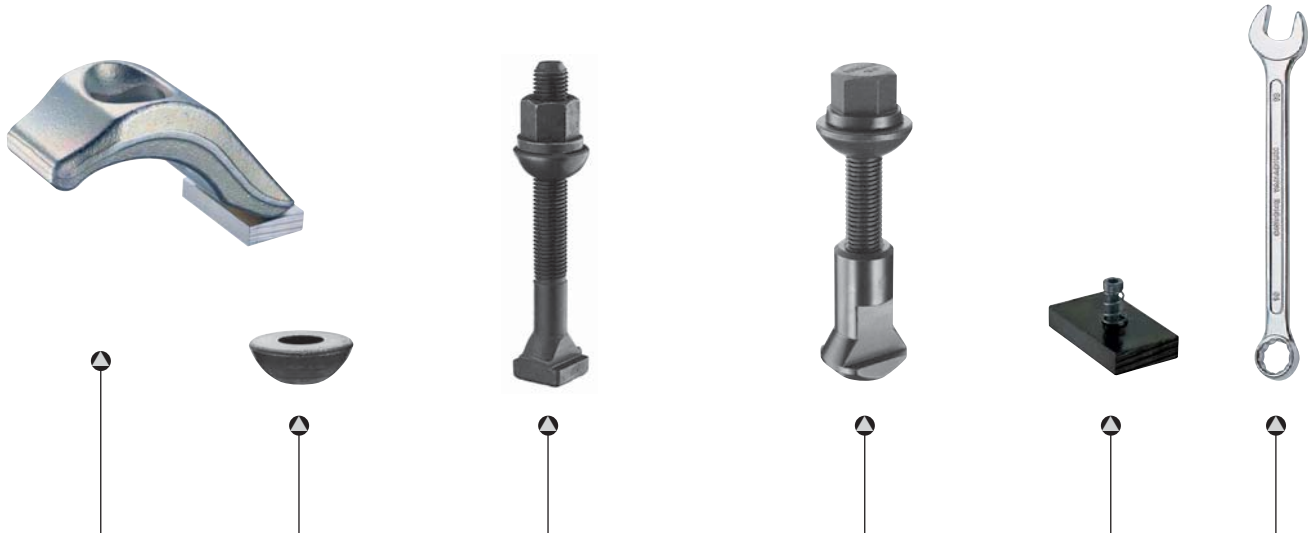


for T-Slots  
(no protruding bolts)



		for T-Slots		for T-Slots (no protruding bolts)					
H	d	a	Part No.	Part No.		B	L1	L2	kN
0-45	M 8	10	-	020-045-0810		46	95	28-44	12
	M10	10	010-045-1010	-					
	M10	12	-	020-045-1012					18
	M12	12	010-045-1212	-					
	M12	14	010-045-1214	020-045-1214					20
	M14	16	010-045-1416	020-045-1416					30
	M16	16	010-045-1616	-					
	M16	18	010-045-1618	020-045-1618					
	M16	20	010-045-1620	020-045-1620					
10-70	M10	12	010-070-1012	020-070-1012		46	125	34-35	18
	M12	12	010-070-1212	-					
	M12	14	010-070-1214	020-070-1214					20
	M14	16	010-070-1416	020-070-1416					32
	M16	16	010-070-1616	-					
	M16	18	010-070-1618	020-070-1618					
10-70	M18	20	010-070-1820	020-070-1820		52	125	39-58	45
	M20	20	010-070-2020	-					
	M20	22	010-070-2022	020-070-2022					
	M20	24	010-070-2024	020-070-2024					
	M20	28	010-070-2028	020-070-2028					

## Clamping Frames S10 – S20 (Spare Parts)



Clamping Frame		Spherical Seat Washer		Fixing Set for T-Slot		Fixing Set for Ø20		Pressure Plate Assembly		Wrench	
Part No.		Part No.		Part No.	L	Part No.	L	Part No.		Part No.	
010-045-17		019-3510		–	–	920-045-0810	65	991-010		620-13	
				910-045-1010	100	–	–			620-16	
		019-3512		–	–	920-045-1012	65			620-18	
				910-045-1212	100	–	–				
				910-045-1214	112	920-045-1214	65				
				910-045-1416	112	920-045-1416	70			620-21	
		019-3516		910-045-1616	125	–	–			620-24	
				910-045-1618	125	920-045-1618	75				
				910-045-1620	150	920-045-1620	75				
				910-045-1622	150	920-045-1622	80				
010-070-17		019-3512		910-070-1012	125	920-070-1012	75	991-010		620-16	
				910-070-1212	125	–	–			620-18	
				910-070-1214	125	920-070-1214	80				
		019-3516		910-070-1416	140	920-070-1416	85			620-21	
				910-070-1616	160	–	–			620-24	
				910-070-1618	150	920-070-1618	85				
010-070-21		019-4020		910-070-1820	160	920-070-1820	95	991-030		620-27	
				910-070-2020	160	–	–			620-30	
				910-070-2022	160	920-070-2022	95				
				910-070-2024	170	920-070-2024	95				
				910-070-2028	180	920-070-2028	105				

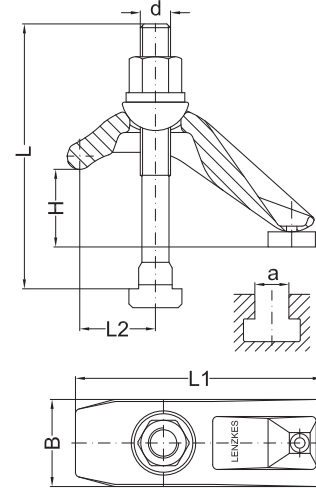
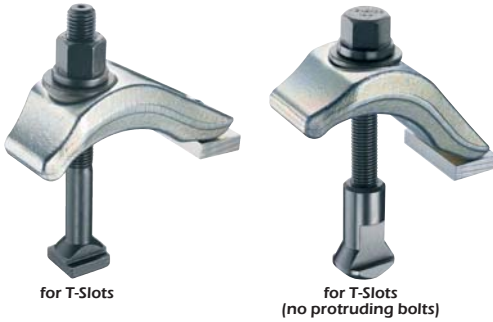
## Clamping Frames S10 – S20 (complete)

**Application Examples:**  
Pressure die casting, pressing, stamping,  
heavy duty milling and drilling

- Stepless vertically adjustable
- S20: No protruding bolts
- Very high clamping forces

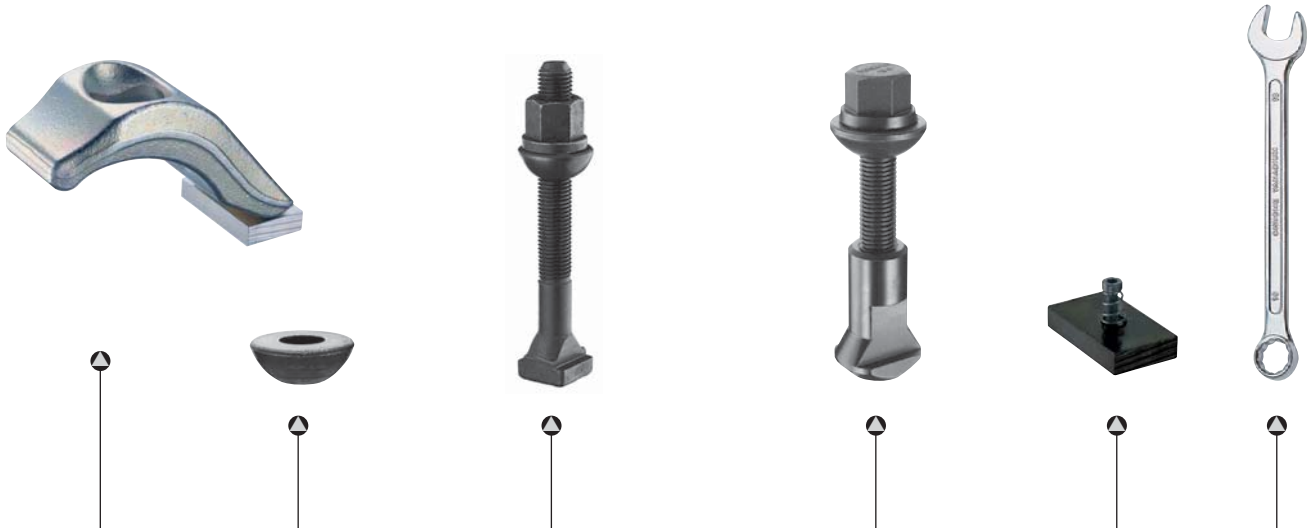
Clamping Force: **Up to 70 kN**

- **Material:** Tempered steel
- **Clamping Frame:** Drop forged



H	d	a	for T-Slots		for T-Slots (no protruding bolts)		B	L1	L2	kN
			Part No.		Part No.					
30–110	M10	12	010-110-1012		020-110-1012		61	162	40–65	18
	M12	12	010-110-1212		–					22
	M12	14	010-110-1214		020-110-1214					35
	M14	16	010-110-1416		020-110-1416					50
	M16	16	010-110-1616		–					60
	M16	18	010-110-1618		020-110-1618					
	M18	20	010-110-1820		020-110-1820					
	M20	20	010-110-2020		–					
	M20	22	010-110-2022		020-110-2022					
	M22	24	010-110-2224		020-110-2224					
	M24	24	010-110-2424		–					
	M24	28	010-110-2428		020-110-2428					
	M24	32	010-110-2432		020-110-2432					
	M24	36	010-110-2436		020-110-2436					
90–180	M12	14	010-180-1214		020-180-1214		62	200	45–70	25
	M14	16	010-180-1416		020-180-1416					35
	M16	16	010-180-1616		–					40
	M16	18	010-180-1618		020-180-1618					50
	M18	20	010-180-1820		020-180-1820					
	M20	20	010-180-2020		–					
	M20	22	010-180-2022		020-180-2022					
	M20	24	–		020-180-2024					
	M22	24	010-180-2224		020-180-2224					60
	M24	24	010-180-2424		–					
	M24	28	010-180-2428		020-180-2428					70
	M24	36	010-180-2436		020-180-2436					
	M24	42	010-180-2442		020-180-2442					

## Clamping Frames S10 – S20 (Spare Parts)



Clamping Frame		Spherical Seat Washer		Fixing Set for T-Slot		Fixing Set for 020		Pressure Plate Assembly		Wrench	
Part No.		Part No.		Part No.	L	Part No.	L	Part No.		Part No.	
010-110-25	019-4516		910-110-1012	180	920-110-1012	100	991-060	620-16			
			910-110-1212	180	-	-		620-18			
			910-110-1214	180	920-110-1214	105					
	019-4516		910-110-1416	190	920-110-1416	110		620-21			
			910-110-1616	200	-	-		620-24			
			910-110-1618	200	920-110-1618	110					
	019-4520		910-110-1820	200	920-110-1820	115		620-27			
			910-110-2020	200	-	-		620-30			
			910-110-2022	200	920-110-2022	120					
	019-4524		910-110-2224	200	920-110-2224	130		620-34			
			910-110-2424	200	-	-		620-36			
			910-110-2428	200	920-110-2428	130					
			910-110-2432	224	920-110-2432	145					
			910-110-2436	224	920-110-2436	145					
	010-180-25	019-4516		910-180-1214	250	920-180-1214		170	991-060	620-18	
				910-180-1416	250	920-180-1416		175		620-21	
910-180-1616				250	-	-	620-24				
910-180-1618				250	920-180-1618	175					
019-4520			910-180-1820	265	920-180-1820	180	620-27				
			910-180-2020	265	-	-	620-30				
			910-180-2022	280	920-180-2022	185					
			-	-	920-180-2024	185					
019-4524			910-180-2224	280	920-180-2224	190	620-34				
			910-180-2424	290	-	-	620-36				
			910-180-2428	290	920-180-2428	190					
			910-180-2436	315	920-180-2436	190					
		910-180-2442	315	920-180-2442	190						

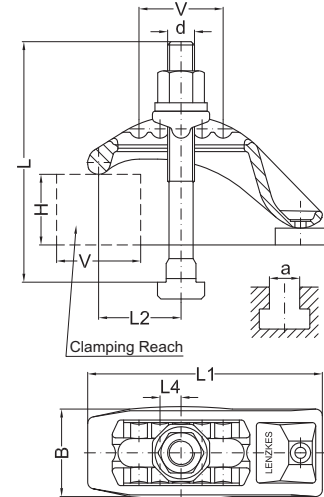
## Clamping Frames S 30 – S 40 (complete)

**Application Examples:**  
Injection moulding, pressing, stamping,  
metal cutting

- Adjustable both vertically and horizontally due to the unique grooved frame design
- S 40: No protruding bolts

Clamping Force: **Up to 30 kN**

- **Material:** Tempered steel
- **Clamping Frame:** Drop forged



			for T-Slots		for Tapped Holes		for T-Slots (no protruding bolts)							
H	d	a	Part No.		Part No.		Part No.		V	B	L1	L2	L4	kN
0–45	M08	10	–		–		040-045-0810		36	48	105	20–65	12	12
	M10	10	030-045-1010		–		–	15						
	M10	12	–		030-045-10		040-045-1012							
	M12	12	030-045-1212		–		–							
	M12	14	030-045-1214		030-045-12		040-045-1214							
0–45	M14	16	030-045-1416		030-045-14		040-045-1416		36	53	110	20–65	12	25
	M16	16	030-045-1616		–		–							
	M16	18	030-045-1618		030-045-16		040-045-1618							
	M16	20	030-045-1620		–		040-045-1620							
	M16	22	030-045-1622		–		040-045-1622							
10–70	M10	12	030-070-1012		030-070-10		040-070-1012		50	53	140	22–72	13	18
	M12	12	030-070-1212		–		–							
	M12	14	030-070-1214		030-070-12		040-070-1214							
	M14	16	030-070-1416		030-070-14		040-070-1416							
	M16	16	030-070-1616		–		–							
	M16	18	030-070-1618		030-070-16		040-070-1618							
30–110	M10	12	030-110-1012		–		040-110-1012		75	53	190	25–95	15	18
	M12	12	030-110-1212		–		–							
	M12	14	030-110-1214		030-110-12		040-110-1214							
	M14	16	030-110-1416		030-110-14		040-110-1416							
	M16	16	030-110-1616		–		–							
	M16	18	030-110-1618		030-110-16		040-110-1618							

## Clamping Frames S30 – S40 (Spare Parts)



Clamping Frame		Pressure Piece	Fixing Set for T-Slot		Fixing Set for Tapped Holes		Fixing Set for Ø40		Pressure Plate Assembly	Wrench
Part No.		Part No.	Part No.	L	Part No.	L	Part No.	L	Part No.	Part No.
030-045-13		039-2812	–	–	–	–	940-045-0810	65	991-010	620-13
			930-045-1010	100	–	–	–	–		620-16
			–	–	930-045-10	112	940-045-1012	65		620-18
			930-045-1212	100	–	–	–	–		
			930-045-1214	112	930-045-12	112	940-045-1214	65		
030-045-17		039-3216	930-045-1416	112	930-045-14	125	940-045-1416	70	991-020	620-21
			930-045-1616	125	–	–	–	–		620-24
			930-045-1618	125	930-045-16	125	940-045-1618	75		
			930-045-1620	125	–	–	940-045-1620	80		
			930-045-1622	125	–	–	940-045-1622	80		
030-070-17	039-3212		930-070-1012	132	930-070-10	140	940-070-1012	75	991-030	620-16
			930-070-1212	132	–	–	–	–		620-18
			930-070-1214	132	930-070-12	140	940-070-1214	80		
	039-3216		930-070-1416	140	930-070-14	150	940-070-1416	85		620-21
			930-070-1616	160	–	–	–	–		620-24
			930-070-1618	150	930-070-16	160	940-070-1618	85		
030-110-17	039-3212		930-110-1012	170	–	–	940-110-1012	100	991-030	620-16
			930-110-1212	180	–	–	–	–		620-18
			930-110-1214	180	930-110-12	200	940-110-1214	105		
	039-3216		930-110-1416	190	930-110-14	200	940-110-1416	110		620-21
			930-110-1616	200	–	–	–	–		620-24
			930-110-1618	200	930-110-16	200	940-110-1618	110		

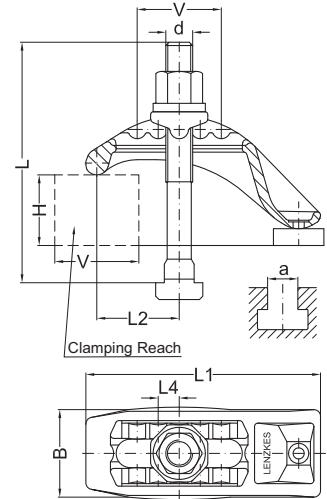


## Clamping Frames S33 – S45 (complete)

- Adjustable both vertically and horizontally due to the unique grooved frame design
- Greater clamping force than S30 or S40
- S45: No protruding bolts

Clamping Force: **Up to 70 kN**

- **Material: Hardened alloy steel**
- **Clamping Frame: Drop forged**



			for T-Slots	for Tapped Holes	for T-Slots (no protruding bolts)						
H	d	a	Part No.	Part No.	Part No.	V	B	L1	L2	L4	kN
10-70	M18	20	033-070-1820	033-070-18	045-070-1820	50	60	152	28-78	13	35
	M20	20	033-070-2020	-	-						45
	M20	22	033-070-2022	033-070-20	045-070-2022						
	M20	24	033-070-2024	-	045-070-2024						
	M20	28	033-070-2028	-	045-070-2028						
10-80	M16	18	033-080-1618	033-080-16	-	60	68	170	30-90	15	35
	M18	20	033-080-1820	-	-						50
	M20	20	033-080-2020	-	-						
	M20	22	033-080-2022	033-080-20	045-080-2022						
	M20	24	-	-	045-080-2024						
	M20	28	-	-	045-080-2028						
	M22	24	033-080-2224	033-080-22	-						
	M24	24	033-080-2424	-	-						
	M24	28	033-080-2428	033-080-24	045-080-2428						
M24	36	033-080-2436	-	-	55						
30-110	M18	20	033-110-1820	033-110-18	045-110-1820	75	60	194	30-110	15	50
	M20	20	033-110-2020	-	-						
	M20	22	033-110-2022	033-110-20	045-110-2022						
	M20	24	033-110-2024	-	045-110-2024						
30-110	M22	24	033-110-2224	033-110-22	045-110-2224	75	68	200	30-110	15	50
	M24	24	033-110-2424	-	-						60
	M24	28	033-110-2428	033-110-24	045-110-2428						
	M24	32	033-110-2432	-	045-110-2432						
	M24	36	033-110-2436	-	045-110-2436						
	M30	-	-	033-110-2430	-						

## Clamping Frames S33 – S45 (Spare Parts)



Clamping Frame		Pressure Piece	Fixing Set for T-Slot		Fixing Set for Tapped Holes		Fixing Set for 045		Pressure Plate Assembly	Wrench			
Part No.		Part No.	Part No.	L	Part No.	L	Part No.	L	Part No.	Part No.			
033-070-21	039-4020	930-070-1820	160	930-070-18	160	940-070-1820	95	991-040	620-27	620-30			
			160		-		-				-		
			160		930-070-20		160				940-070-2022	95	
			170		-		-				940-070-2024	105	
			180		-		-				940-070-2028	105	
033-080-25	039-4516	930-080-1618	160	930-080-16	160	-	-	991-070	620-24	620-27			
			160		-						-	-	
			160		-						-	-	
			180		930-080-20						180	940-080-2022	112
			-		-						-	940-080-2024	120
	039-4524	930-080-2224	200	930-080-22	190	-	-	620-34	620-36				
			200		-					-	-		
			200		930-080-24					200	940-080-2428	115	
			224		-					-	-		
033-110-21	039-4020	930-110-1820	200	930-110-18	212	940-110-1820	115	991-060	620-27	620-30			
			200		-		-				-		
			212		930-110-20		224				940-110-2022	120	
			224		-		-				940-110-2024	130	
033-110-25	039-4524	930-110-2224	224	930-110-22	224	940-110-2224	130	991-070	620-34	620-36			
			224		-		-				-		
			224		930-110-24		250				940-110-2428	130	
			230		-		-				940-110-2432	145	
			230		-		-				940-110-2436	145	
			-		930-110-24-30		250				-	-	

# Clamping Frames

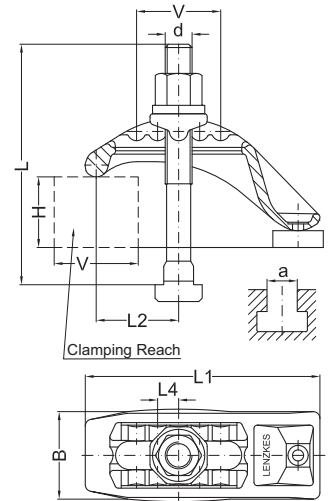
## S33 – S45 (complete)

**Application Examples:**  
Injection moulding, pressing, stamping, metal cutting

- Adjustable both vertically and horizontally due to the unique grooved frame design
- Greater clamping force than S30 or S40
- S45: No protruding bolts

Clamping Force: **Up to 70 kN**

- **Material:** Tempered steel
- **Clamping Frame:** Drop forged



			for T-Slots	for Tapped Holes	for T-Slots (no protruding bolts)						
H	d	a	Part No.	Part No.	Part No.	V	B	L1	L2	L4	kN
60–160	M20	20	033-160-2020	–	–	80	85	250	45–125	16	50
	M20	22	033-160-2022	033-160-20	045-160-2022						60
	M24	24	033-160-2424	–	–						70
	M24	28	033-160-2428	033-160-24	045-160-2428						
	M30	36	033-160-3036	033-160-30	–						
	M30	42	033-160-3042	–	–						
90–180	M12	14	033-180-1214	–	045-180-1214	90	70	240	35–125	15	25
	M14	16	033-180-1416	–	045-180-1416						35
	M16	18	033-180-1618	033-180-16	045-180-1618						50
	M18	20	033-180-1820	033-180-18	045-180-1820						
	M20	20	033-180-2020	–	–						
	M20	22	033-180-2022	033-180-20	045-180-2022						
	M20	24	–	–	045-180-2024						
	M22	24	033-180-2224	–	045-180-2224						
	M24	24	033-180-2424	–	–						
	M24	28	033-180-2428	033-180-24	045-180-2428						60
	M24	36	033-180-2436	–	045-180-2436						
	M24	42	033-180-2442	–	045-180-2442						
	M30	–	–	033-180-24-30	–						
130–260	M16	18	033-260-1618	–	–	90	70	280	40–130	15	35
	M18	20	033-260-1820	–	–						50
	M20	22	033-260-2022	033-260-20	045-260-2022						
	M20	24	–	–	045-260-2024						
	M22	24	033-260-2224	–	–						
	M24	28	033-260-2428	033-260-24	045-260-2428						60
	M24	36	033-260-2436	–	–						
	M30	–	–	033-260-24-30	–						

## Clamping Frames S33 – S45 (Spare Parts)



Clamping Frame		Pressure Piece	Fixing Set for T-Slot		Fixing Set for Tapped Holes		Fixing Set for 045		Pressure Plate Assembly	Wrench
Part No.		Part No.	Part No.	L	Part No.	L	Part No.	L	Part No.	Part No.
033-160-31	038-6220	038-6224	930-160-2020	265	–	–	–	–	991-070	620-30
			930-160-2022	280	930-160-20	300	940-160-2022	165		620-36
			930-160-2424	290	–	–	–	–		620-46
	930-160-2428		290	930-160-24	315	940-160-2428	170			
	930-160-3036		315	930-160-30	315	–	–			
	930-160-3042		315	–	–	–	–			
033-180-25	039-4516	039-4520	930-180-1214	250	–	–	940-180-1214	170	991-070	620-18
			930-180-1416	250	–	–	940-180-1416	175		620-21
			930-180-1618	265	930-180-16	280	940-180-1618	175		620-24
	930-180-1820		265	930-180-18	280	940-180-1820	180	620-27		
	930-180-2020		265	–	–	–	–	620-30		
	930-180-2022		280	930-180-20	300	940-180-2022	185			
	–		–	–	–	940-180-2024	185			
	930-180-2224		280	–	–	–	–	620-34		
	930-180-2424		290	–	–	–	–	620-36		
	930-180-2428		290	930-180-24	315	940-180-2428	190			
	930-180-2436		290	–	–	940-180-2436	190			
	930-180-2442		290	–	–	940-180-2442	190			
	–		–	930-180-2430	315	–	–			
	033-260-25		039-4516	930-260-1618	360	–	–	–		–
039-4520		930-260-1820	360	–	–	–	–	620-27		
		930-260-2022	365	930-260-20	385	940-260-2022	225	620-30		
		–	–	–	–	940-260-2024	225			
039-4524		930-260-2224	370	–	–	–	–	620-34		
		930-260-2428	380	930-260-24	400	940-260-2428	230	620-36		
		930-260-2436	380	–	–	–	–			
	–	–	930-260-2430	400	–	–				