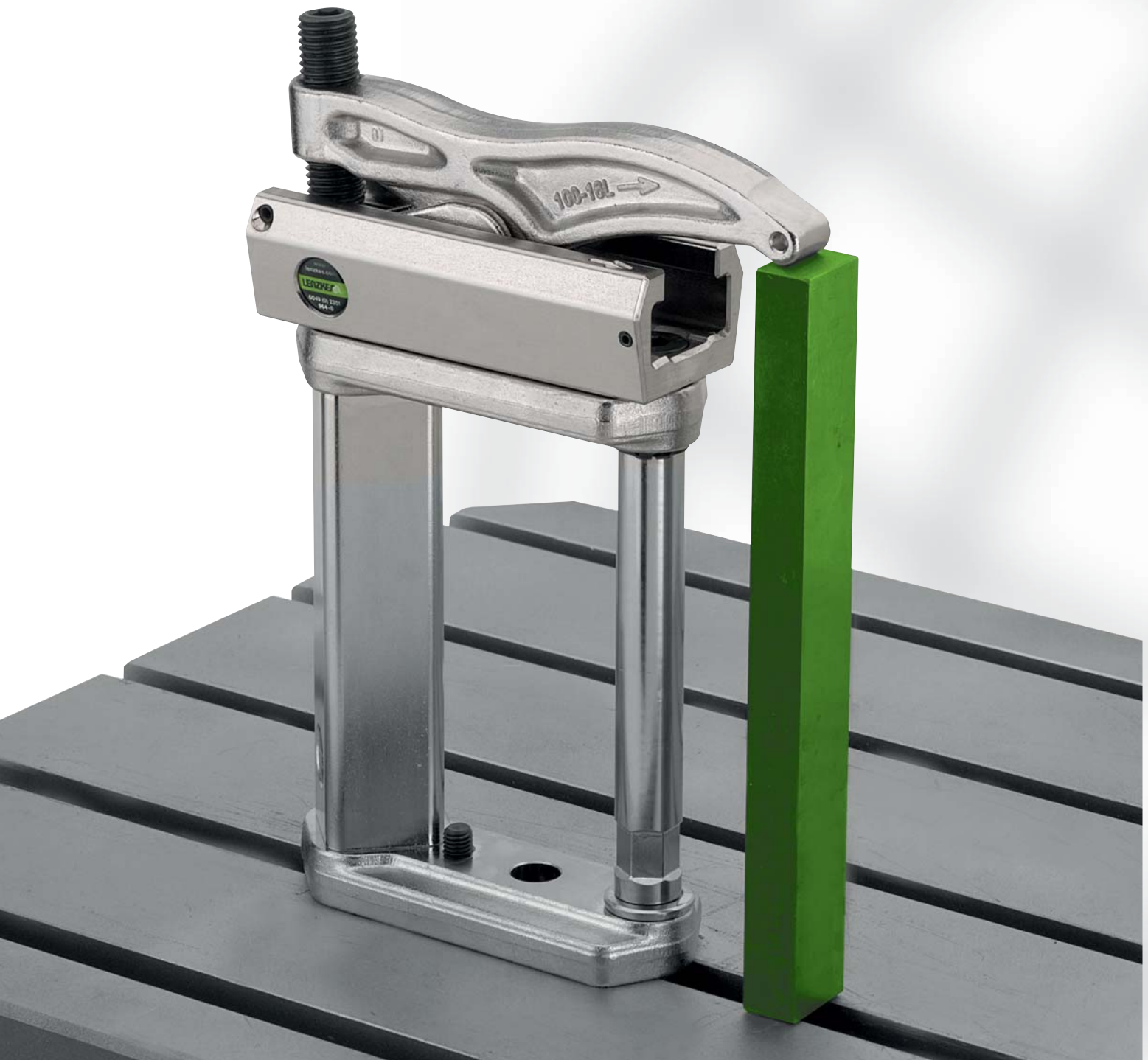
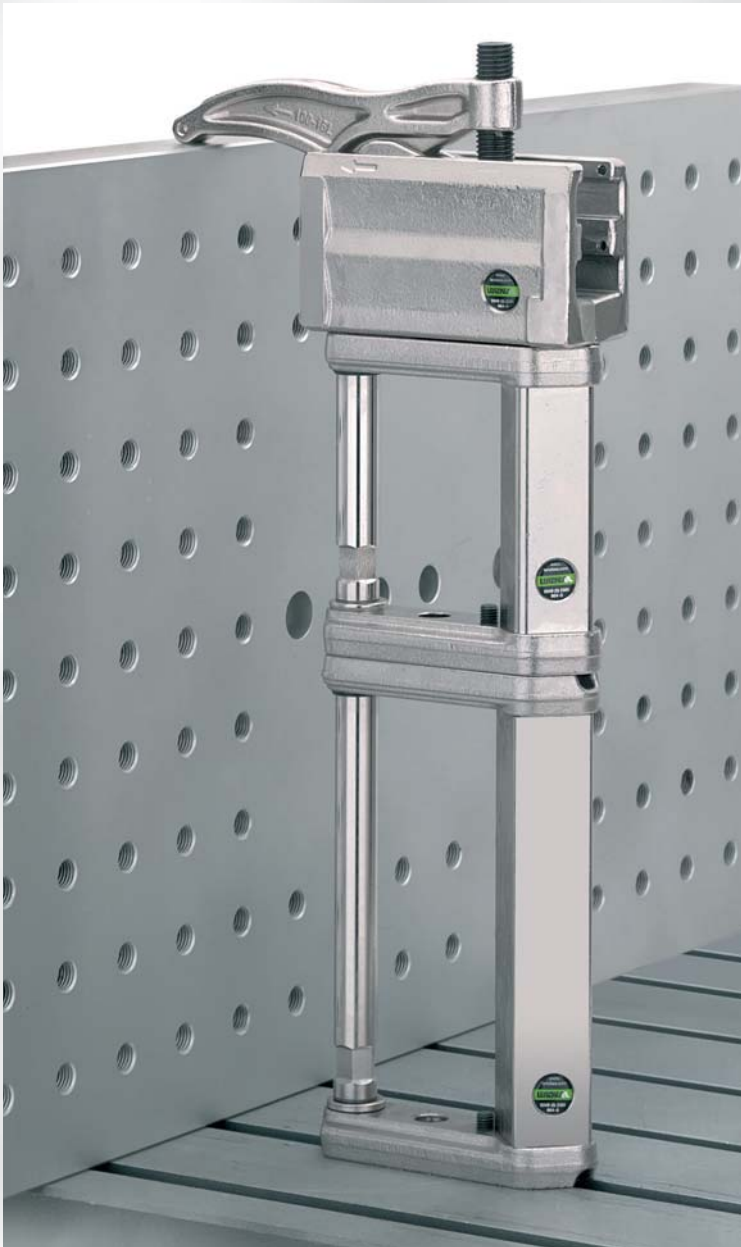


Extension Blocks – Overcoming various clamping heights B50/A58

B50 has a clamping force up to 60 kN.
The Extension Blocks made from extra strong aluminium alloy are an ideal addition to the MQ-Series clamps. They are generally used for pressing, stamping, milling and drilling.

A58 has a clamping force up to 80 kN.
The Extension Blocks made from steel are a versatile addition to the MQ-Series clamps. They are generally used for injection moulding, pressing, stamping, milling and drilling up to 1,000 mm.



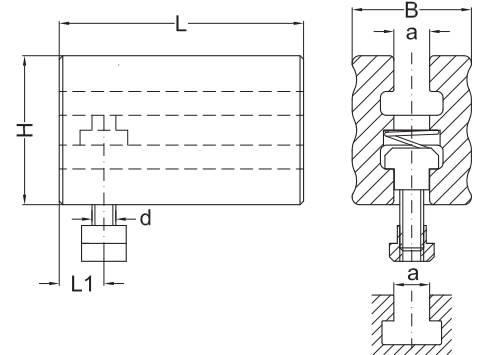


Extension Blocks B50 (complete)

■ An ideal addition to the MO-Series clamps for increased clamping heights

Clamping Force: **Up to 60 kN**

■ **Material: Aluminium alloy**



			for T-Slots		for Tapped Holes						Fixing Set with Spring		Allen Key			
H	d	a	Part No.		Part No.		L	B	L1	kN	Part No.	L		Part No.		
50	M08	12	053-050-0812-8		053-050-08-8		82	40	15	15	950-0812-8	30		610-06		
	M10		053-050-1012-8		053-050-10-8					20	950-1012-8	35				
	M08	050-050-0812		050-050-08		125	40	20	15	950-050-0812	30					
	M10	050-050-1012		050-050-10					25	950-050-1012	35					
110	M08	12	050-110-0812		050-110-08		125	40	15	15	950-050-0812	30		610-06		
	M10		050-110-1012		050-110-10					25	950-050-1012	35				
55	M12	14	053-055-1214-8		053-055-12-8		82	45	20	30	950-1214-8	36		610-06		
			053-055-1214		053-055-12						135	950-050-1214		38		610-08
120			053-120-1214		053-120-12											
65	M14	16	050-065-1416		050-065-14		125	55	25	35	950-050-1416	48		610-10		
125			050-125-1416		050-125-14											
70	M16	18	053-070-1618		053-070-16		155	60	25	40	950-050-1618	52		610-10		
125			053-125-1618		053-125-16											55
85	M18	20	050-085-1820		050-085-18		180	66	25	50	950-050-1820	60		610-12		
175			050-175-1820		050-175-18											
90	M20	22	053-090-2022		053-090-20		175	70	25	50	950-050-2022	68		610-12		
175			053-175-2022		053-175-20											66
100	M22	24	050-100-2224		050-100-22		180	84	30	60	950-050-2224	80		610-12		
190			050-190-2224		050-190-22											
110	M24	28	053-110-2428		053-110-24		205	90	30	60	950-050-2428	86		610-12		
200			053-200-2428		053-200-24											

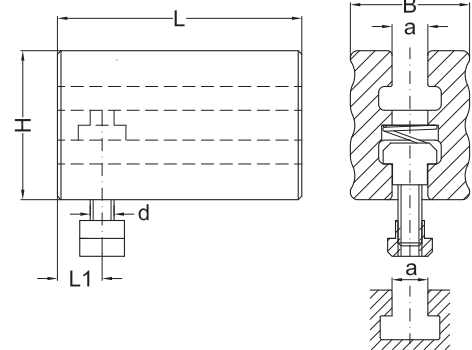
Extension Blocks B 50 (complete)

- An ideal addition to the MQ-Series clamps for increased clamping heights

- Material: Aluminium alloy

- Short style

Clamping Force: **Up to 60 kN**



			for T-Slots		for Tapped Holes						Fixing Set with Spring		Allen Key		
H	d	a	Part No.		Part No.		L	B	L1	kN	Part No.	L		Part No.	
50	M08	12	054-050-0812-8		054-050-08-8		65	40	15	15	950-0810-8	30		610-06	
	M10		054-050-1012-8		054-050-10-8					20	950-1012-8	35			
	M08		051-050-0812		051-050-08					20	15	950-050-0810			30
	M10		051-050-1012		051-050-10						25	950-050-1012			35
110	M08	12	051-110-0812		051-110-08		80	40	15	15	950-050-0812	30		610-06	
	M10		051-110-1012		051-110-10					20	950-050-1012	35			
-	-	-	-		-		-	-	-	-	-	-		-	
55	M12	14	054-055-1214		054-055-12		95	45	20	30	950-050-1214	38		610-08	
120			054-120-1214		054-120-12										
65	M14	16	051-065-1416		051-065-14		80	55	25	35	950-050-1416	48		610-10	
125			051-125-1416		051-125-14										
70	M16	18	054-070-1618		054-070-16		110	60	25	40	950-050-1618	52		610-10	
125			054-125-1618		054-125-16						55				
85	M18	20	051-085-1820		051-085-18		100	66	25	50	950-050-1820	60		610-12	
175			051-175-1820		051-175-18										
90	M20	22	054-090-2022		054-090-20		125	70	25	50	950-050-2022	68		610-12	
175			054-175-2022		054-175-20						66				
100	M22	24	051-100-2224		051-100-22		100	84	30	60	950-050-2224	80		610-12	
190			054-190-2224		054-190-22						150				
110	M24	28	054-110-2428		054-110-24		150	90	30	60	950-050-2428	86		610-12	
200			054-200-2428		054-200-24										

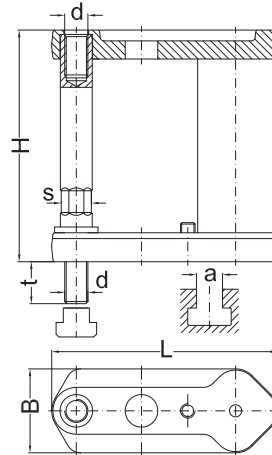


Extension Blocks A 58 (complete)

Clamping Force: **Up to 80 kN**

- An ideal addition to the MQ-Series clamps for great clamping heights
- Safer working heights achievable by securing directly into the machine table due to unique design of the block

- **Material: Alloy steel**
- **Connecting Element: Drop forged, tempered steel**
- **Clamping Rod: Hardness class 10.9**



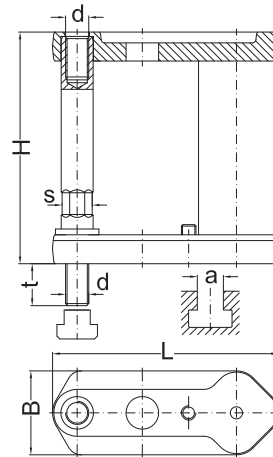
			for T-Slots		for Tapped Holes							Wrench	
H	d	a	Part No.		Part No.		B	L	t	s	kN	Part No.	
80	M08	10	058-080-0810		058-080-08		48	135	16	16	16	622-1618	
125			058-125-0810		058-125-08								
160			058-160-0810		058-160-08								
80	M10	12	058-080-1012		058-080-10		48	135	19	16	25	622-1618	
125			058-125-1012		058-125-10								
160			058-160-1012		058-160-10								
200			058-200-1012		058-200-10								
250			058-250-1012		058-250-10								
80	M12	14	058-080-1214		058-080-12		48	135	22	16	35	622-1618	
125			058-125-1214		058-125-12								
160			058-160-1214		058-160-12								
200			058-200-1214		058-200-12								
250			058-250-1214		058-250-12								
315			058-315-1214		058-315-12								
400			058-400-1214		058-400-12								
80	M14	16	058-080-1416		058-080-14		58	155	25	18	50	622-1618	
125			058-125-1416		058-125-14								
160			058-160-1416		058-160-14								
200			058-200-1416		058-200-14								
250			058-250-1416		058-250-14								
80	M16	18	058-080-1618		058-080-16		58	155	29	18	70	622-1618	
125			058-125-1618		058-125-16								
160			058-160-1618		058-160-16								
200			058-200-1618		058-200-16								
250			058-250-1618		058-250-16								
315			058-315-1618		058-315-16								
400			058-400-1618		058-400-16								

- An ideal addition to the MQ-Series clamps for great clamping heights
- Safer working heights achievable by securing directly into the machine table due to unique design of the block

Extension Blocks A58 (complete)

- **Material:** Hardened alloy steel
- **Connecting Element:** Drop forged, tempered steel
- **Clamping Rod:** Hardness class 10.9

Clamping Force: **Up to 80 kN**



			for T-Slots		for Tapped Holes							Wrench	
H	d	a	Part No.		Part No.		B	L	t	s	kN	Part No.	
100	M18	20	058-100-1820		058-100-18		68	180	33	24	90	622-2427	
160			058-160-1820		058-160-18								
200			058-200-1820		058-200-18								
250			058-250-1820		058-250-18								
315			058-315-1820		058-315-18								
400			058-400-1820		058-400-18								
500			058-500-1820		058-500-18								
100	M20	22	058-100-2022		058-100-20		68	180	37	24	110	622-2427	
160			058-160-2022		058-160-20								
200			058-200-2022		058-200-20								
250			058-250-2022		058-250-20								
315			058-315-2022		058-315-20								
400			058-400-2022		058-400-20								
500			058-500-2022		058-500-20								
100	M22	24	058-100-2224		058-100-22		80	210	42	27	140	622-2427	
160			058-160-2224		058-160-22								
200			058-200-2224		058-200-22								
250			058-250-2224		058-250-22								
315			058-315-2224		058-315-22								
400			058-400-2224		058-400-22								
500			058-500-2224		058-500-22								
100	M24	28	058-100-2428		058-100-24		80	210	47	30	160	622-2730	
160			058-160-2428		058-160-24					27			
200			058-200-2428		058-200-24								
250			058-250-2428		058-250-24								
315			058-315-2428		058-315-24								
400			058-400-2428		058-400-24								
500			058-500-2428		058-500-24								

